

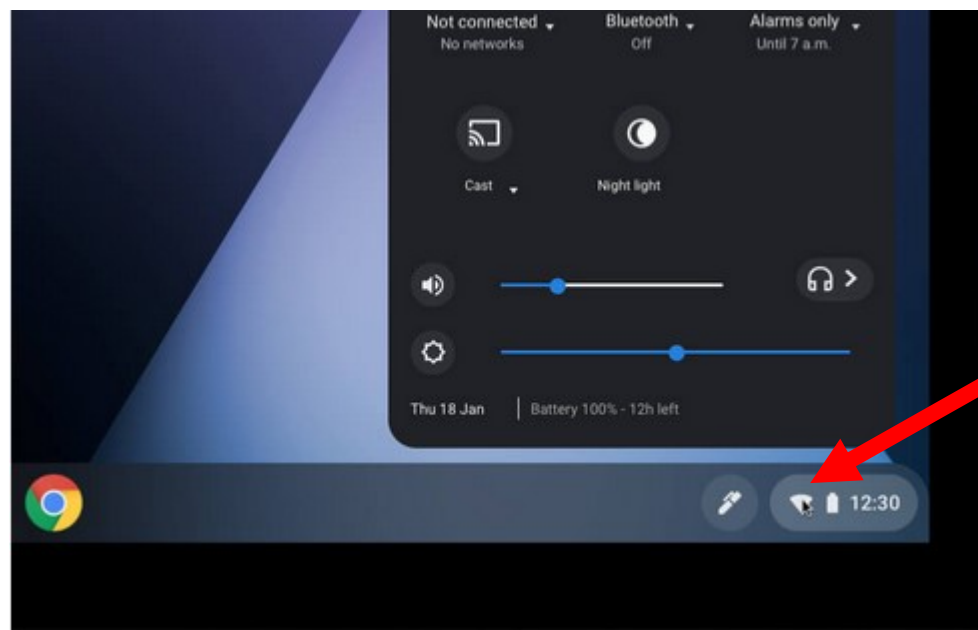
Wi-Fi Internet Access Connection Procedure

Chromebook

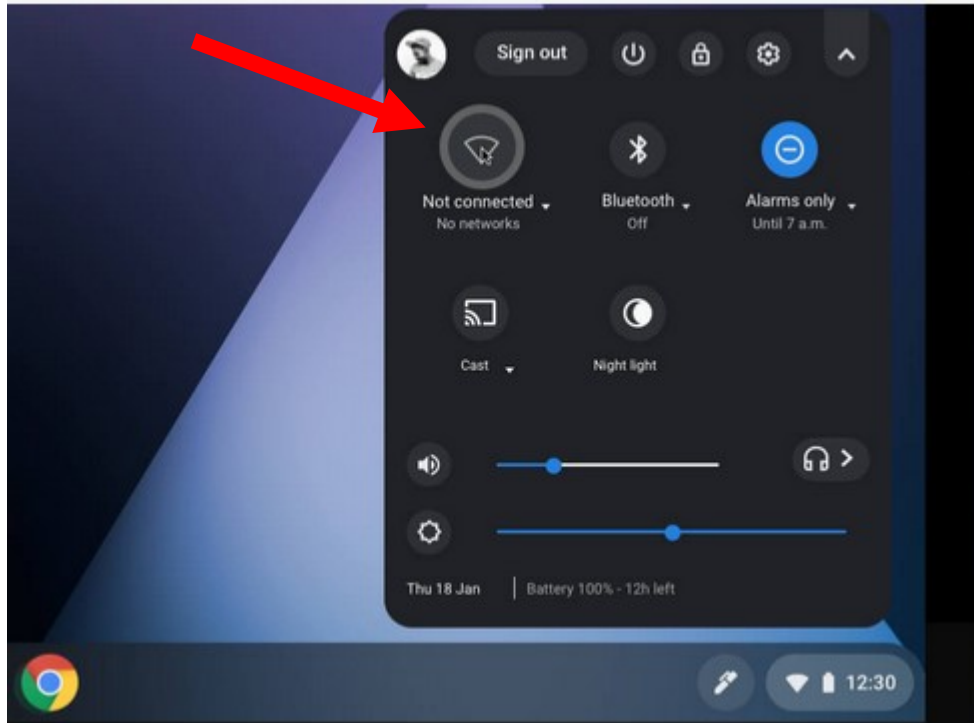
The library has provided wireless network service to connect your personal device to the World Wide Web while at your public library. All you need is a device with wireless adapter (Wi-Fi) and web browser. **(NOTE: Your web browser must have cookies enabled to access the internet. Network settings must be set to automatic and proxies must be disabled.)**

The following section describes how to connect to a wireless network using a **Google Chromebook**. This document presumes that you have the appropriate permissions on your laptop to setup a wireless connection.

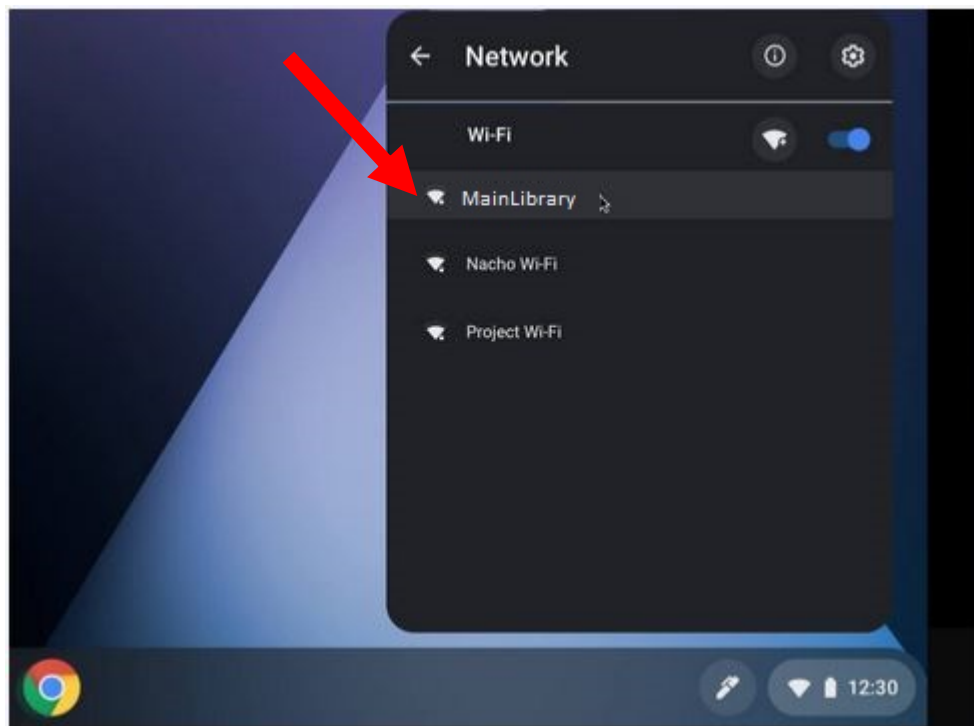
1. Click on the Quick Settings Panel at the bottom right of your screen.



2. Click on “no-network.”




3. A list of wireless networks will be displayed. These are all the networks that are within range of your computer. Find the network that displays the **Library's Name** and click on it. (Ex. "MainLibrary")



Allow time for device to connect to network.

4. Now that your connection has been established, open your internet browser.
5. You will be directed to the page shown below:




MainLibrary

Please acknowledge the following statements before accessing the Internet.

Access to the Service

The Service is a free public service provided by Miami-Dade County and its Hosts who provide Nodes and bandwidth ("Hosts"). Your access to the Service is completely at the discretion of Miami-Dade County, and your access to the Service may be blocked, suspended, or terminated at any time for any reason including, but not limited to, violation of this Agreement, actions that may lead to liability for Miami-Dade County or its Hosts, disruption of access to other Users or networks, and violation of applicable laws or regulations. Miami-Dade County may revise this Agreement at any time. By logging on to the system, you accept this Agreement, and it is your responsibility to review it for any changes each time.

[Continue to the Internet](#)



CISCO Powered by Cisco Meraki

Click **Continue to the Internet** to access the Internet.

Limitations and Disclaimers

- The Library's wireless network uses an unsecure open connection. Information sent from or to your laptop can be captured by anyone else with a wireless device and the appropriate software, within three hundred feet
- Library staff is not able to provide technical assistance and no guarantee can be provided that you will be able to make a wireless connection
- The Library assumes no responsibility for the safety of equipment or for laptop configurations, security, or data files resulting from connection to the Library's network
- Printing is available at all Library locations from your personal Laptop or mobile device. If printing is desired you may sign up for one of the Library's PC'S or request a laptop, and print via the Library's print management system, or utilize our Mobile Printing feature. For more details on mobile printing, please visit our website at www.mdpls.org.

Library Name	(SSID) Wireless Network Name	Library Name	(SSID) Wireless Network Name
Allapattah	➤ <i>Allapattah</i>	Main Library	➤ <i>MainLibrary</i>
Arcola Lakes	➤ <i>ArcolaLakes</i>	Miami Beach Regional	➤ <i>MiamiBeach</i>
Bay Harbor	➤ <i>BayHarbor</i>	Miami Lakes	➤ <i>MiamiLakes</i>
Civic Center	➤ <i>CivicCenter</i>	Miami Springs	➤ <i>MiamiSprings</i>
California Club	➤ <i>CaliforniaClub</i>	Model City	➤ <i>ModelCity</i>
Coconut Grove	➤ <i>CoconutGrove</i>	Naranja	➤ <i>Naranja</i>
Concord	➤ <i>Concord</i>	North Central	➤ <i>NorthCentral</i>
Coral Gables	➤ <i>CoralGables</i>	North Dade Regional	➤ <i>NorthDade</i>
Coral Reef	➤ <i>CoralReef</i>	North Shore	➤ <i>NorthShore</i>
Country Walk	➤ <i>CountryWalk</i>	Northeast	➤ <i>Northeast</i>
Culmer/Overtown	➤ <i>CulmerOvertown</i>	Opa-Locka	➤ <i>Opa-Locka</i>
Doral	➤ <i>Doral</i>	Palm Springs North	➤ <i>PalmSprings</i>
Edison	➤ <i>Edison</i>	Palmetto Bay	➤ <i>PalmettoBay</i>
Fairlawn	➤ <i>Fairlawn</i>	Pinecrest	➤ <i>Pinecrest</i>
Golden Glades	➤ <i>GoldenGlades</i>	Shenandoah	➤ <i>Shenandoah</i>
Hialeah Gardens	➤ <i>HialeahGardens</i>	South Dade Regional	➤ <i>SouthDade</i>
Hispanic	➤ <i>Hispanic</i>	South Miami	➤ <i>SouthMiami</i>
Homestead	➤ <i>Homestead</i>	South Shore	➤ <i>SouthShore</i>
International Mall	➤ <i>IntlMallLibrary</i>	Sunny Isles Beach	➤ <i>SunnyIsles</i>
Kendale Lakes	➤ <i>KendaleLakes</i>	Sunset	➤ <i>SunsetLibrary</i>
Kendall	➤ <i>Kendall</i>	Tamiami	➤ <i>Tamiami</i>
Key Biscayne	➤ <i>KeyBiscayne</i>	Virrick Park	➤ <i>VirrickPark</i>
Lakes of the Meadows	➤ <i>LakesoftheMeadows</i>	Westchester Regional	➤ <i>Westchester</i>
Lemon City	➤ <i>LemonCity</i>	West Flagler	➤ <i>WestFlagler</i>
Litter River	➤ <i>LitterRiver</i>	West Kendall Regional	➤ <i>WestKendall</i>