

Community Meeting

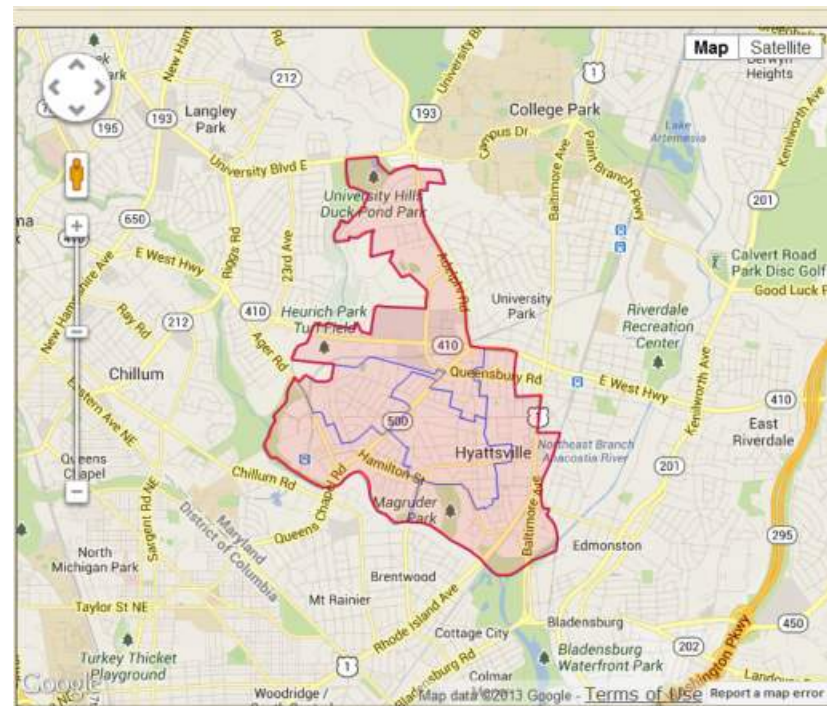
13 August 2014

- Welcome & Overview of Project
- Community Ideas & Input
- G+P Library Experience
- Hyattsville Library Site Concepts



Project Overview

- August 2013 – Community Meeting
- July 2014 – Community Meeting
- August 13, 2014 – Community Meeting
- September 16, 2014 – Community Meeting
- Fall 2014 – Schematic Design
- Winter / Spring 2015 – Design Documents
- Late 2015 – Final design and go out to bid
- 2016 – Construction of the new Library



Community Ideas & Input

Today's discussion:

What Would Make
This Project a Success
for You?



Comments from Public Meeting- July 19, 2014

- Prefer mid-century modern (like E.D. stone & churches)
- Concern about traffic
- Renovated library would be dramatically renewed
- Plan 2035 process – does this process meet those guidelines?
- The need to provide top of the line library services will trump any other criteria
- Child, adult, periodical, teens, etc. – 6 parts
- Ambiance
- Saucer – take it or leave it; lots of people hate it
- Sightlines – we have five service desks (typical libraries have 2)
- The current library is not safe in terms of layout and visibility
- Current building is not child friendly
- Excited about a new library with more light; need to be inviting and joyous
- Hope to have a new building

Comments from Public Meeting- July 19, 2014

- Outdoor reading area
- More green space – Option C is preferred
- Concerned about parking
- Would like a library as soon as possible
- Community involvement
- Interested in historic elements
- Environmental accessibility
- Increased community amenities and accessibility
- Architecturally enticing
- Pedestrian friendly
- Cut through to Metro on the site
- The library doesn't work physically
- Accessibility, natural light
- Opportunity to preserve a community icon
- The librarians are the professionals who know what they need
- As many people don't like the saucer who do – or we don't know – no study done
- Just because something is old doesn't mean we have to keep it
- We need to act

Public Comments - August 13, 2013

Program

- Expand services, book collection and computers.
- Provide vibrant spaces for learning, interaction, and private reflection
- Welcoming to all ages and cultures

Community

- “Saucer” is an important architectural feature and a community icon
- Library should interact physically and programmatically with surrounding buildings and community
- Sustainable and environmentally friendly

Accessibility

- Universally accessible for all people, regardless of their disabilities
- Friendly and easily navigable for pedestrians, bicycles, and vehicles
- Open feeling- not overwhelmed with large stacks in narrow rows

Comments from Public Meeting- August 13, 2013

- Universally designed for disabilities
- Room for books!
- Accessible shelving
- Move closer to the road
- The spaceship draws kids to library
- Connect with the schools & community for input
- Welcoming to all cultural diversity
- Inviting to all age groups and demographics
- Concerned about admin loss
- Current library has diverse collection
- More computers and more books
- Current library is very functional, staff knowledgeable
- Current library is important refuge for the homeless
- Expand quiet study rooms
- Look at diverse focus groups, important demographic
- Historic character
- Maximize size of collection (of books)
- Places to wander, find material and sit
- Quiet spaces for contemplation
- Access to broad range of information
- Library is about learning and traveling through books
- Walkability is a plus, and accessibility
- Warm feeling, natural materials
- Café is great, but not if will take away from the collection

Comments from Public Meeting- August 13, 2013

- Use study – team must understand library users and reach out to diverse users
- Save the spaceship in some way!!
- How is soaring ceiling energy efficient?
- Connect with University of Maryland
- Consider parking spaces for bikes
- Enough parking spaces
- Keep information & people who can help – real life librarian important
- Likes idea of natural light and soaring ceiling (book) (comps) (Cape Myrtle trees)
- Great librarians – work with children
- Make the books the central focus, especially children's area instead of computers
- Plenty of space to plug in and places to get away
- Open space – places for parents and still be able to supervise children
- Emergency command center for community and kids
- Signage is very important
- Do your homework – lots of growth happening – multiple generations; get trends and recent demographic areas
- Tie the library program with the demand for now and the future
- Save the saucer

Comments from Public Meeting- August 13, 2013

- Consideration for the pedestrian
- People come to the library and find what they did not come for – discovery
- Use of solar orientation
- Green roof
- Green roof would be unique opportunity for the area
- Synergy between library and community center
- Maintain balance between modern and traditional
- Securing the collection (one entry/exit, RFID, theft detection gates)
- Literacy council?
- Under floor wiring system
- Large and vibrant book collection to attract younger generation
- Collection to be accessible – not cramped
- Accommodate books and computers, expand and make book collection central to the library
- Library can be key to serve the community
- Accessibility key with a two-story building
- Workable staff area and information area
- Shorter less overwhelming stacks
- Comfy chairs, & tables
- Public gathering space
- Libraries – function as summer school
- Children’s area – tables & puzzles, think as a child, places to discover

Comments from Public Meeting- August 13, 2013

- Connect content of book with physical environment
- Year around enclosed connection bridge
- Meeting room amenity – for movies, performances
- Connect meeting room locations with teen areas
- Staffed café may build better community – nutrition awareness
- The reference in person librarian is critical to help open up learning
- No staffed café – budget cuts? Self serve!
- Importance of flexibility
- Sightlines – supervising library to be staffed by min. staff (budget)
- Encourage recycling system
- Green space

Future Community Meetings:

- **Tuesday September 16th – 7 to 9 pm**
Hyattsville Branch Library



Sharing Ideas For Your New Hyattsville Library

G+P Library Experience

- Laurel Library
- Miller Library & Historical Center HCL
- Burke Centre Library * FCPL
- Bethesda Regional Library MCPL
- Rockville Regional Library MCPL
- Gum Spring Library * LCPL
- New Baltimore Library * FCPL
- Crozet Library * JMRLS
- Hopewell Library * ARLS
- Quince Orchard Library MCPL
- Frostburg Library * APL
- George's Creek Library * APL
- Perryville Library * CCPL
- Chesapeake City Library * CCPL
- Prince Frederick Library *CL
- East Columbia Library HCL
- Glenwood Library HCL
- Crofton Library AAPL
- Wicomico Regional Library * WFLS



24 Years of Award Winning Libraries

Welcoming + Inviting: Inside and Out



Welcoming + Inviting: Inside and Out



The new Laurel Library design

Materials for personal enrichment



Focused on the needs of our customers



Strategies for life long learning



Inspiring Sustainable Design



SUSTAINABLE BUILDING FEATURES:

NATURAL DAYLIGHTING

- Harvest natural light via windows and clerestories
- Provide high performance, double-glazed, low-E windows to maximize natural light & minimize UV
- Indirect / Direct Lighting
- Few Lamp types, long lifespan, energy efficient
- LED's, T-5's, Compact Fluorescent lighting
- Translucent roller shades control glare
- Light, bright, and airy interior finishes



A state of the art educational center for the community and a friendly, comfortable place for staff and visitors.

HEALTHY OUTDOOR ENVIRONMENTS

- Connect with natural site surroundings for educational opportunities
- Passive Strategies: Orientation, Envelope Optimization
- Bioswales
- Permeable Pavement
- Views, Views, Views



Sustainable Design at Grimm + Parker

Grimm + Parker Staff includes 47 LEED Accredited Professionals

Sustainable Design Concepts:

- Reduce building's impact on the environment
- Conserve use of natural resources
- Increase energy efficiency
- Improve indoor air quality
- Maximize daylighting
- Acoustics, acoustics, acoustics
- Educational Opportunities

We have 28 LEED Certified projects (80% Gold)
Over 30 projects currently USGBC registered and tracking LEED in design and CA.

TOOLS TO BE USED:

- LEED-NC, LEED-S and LEED-ND
- IgCC, ASHRAE 189.1, Energy Star
- SUSTAINABLE SITES INITIATIVE FOR SUSTAINABLE SITE / COMMUNITY STRATEGIES
- USDE Green Ribbon School Program
- MD Association for Environmental and Outdoor Education (MAEOE)

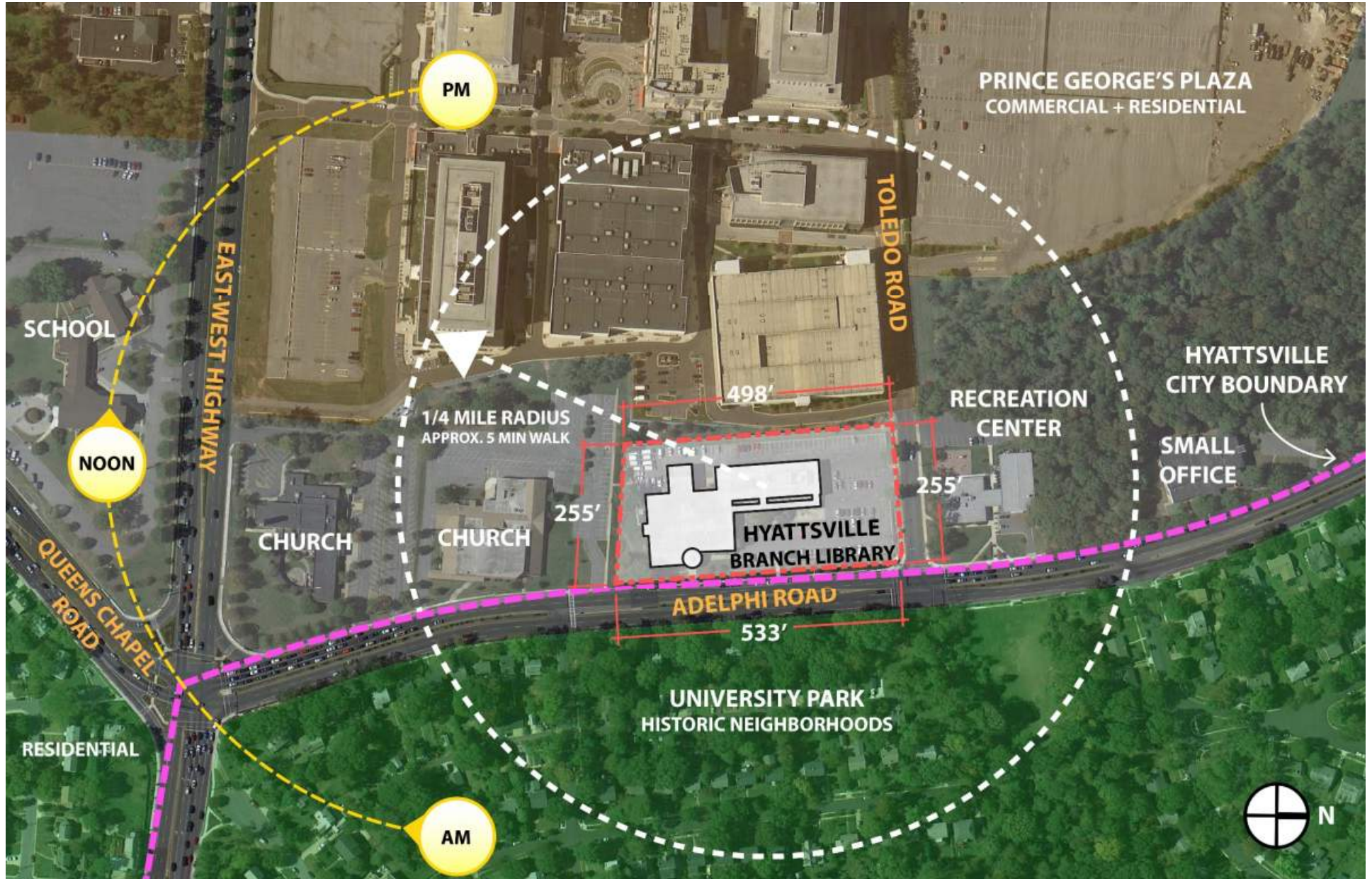


Hyattsville Library Project

- Design and deliver a new library for Hyattsville Approximately 35,000 sf
- Create an engaging, inviting and inspiring vision for your new Library
- Develop an appropriate architectural character that creates a sense of place
- Provide parking + electric charging stations
- Design should be cost effective to maintain
- Provide an energy efficient, sustainable design



Local Context



Local Context



Local Context



Local Context



Adjacent Garage



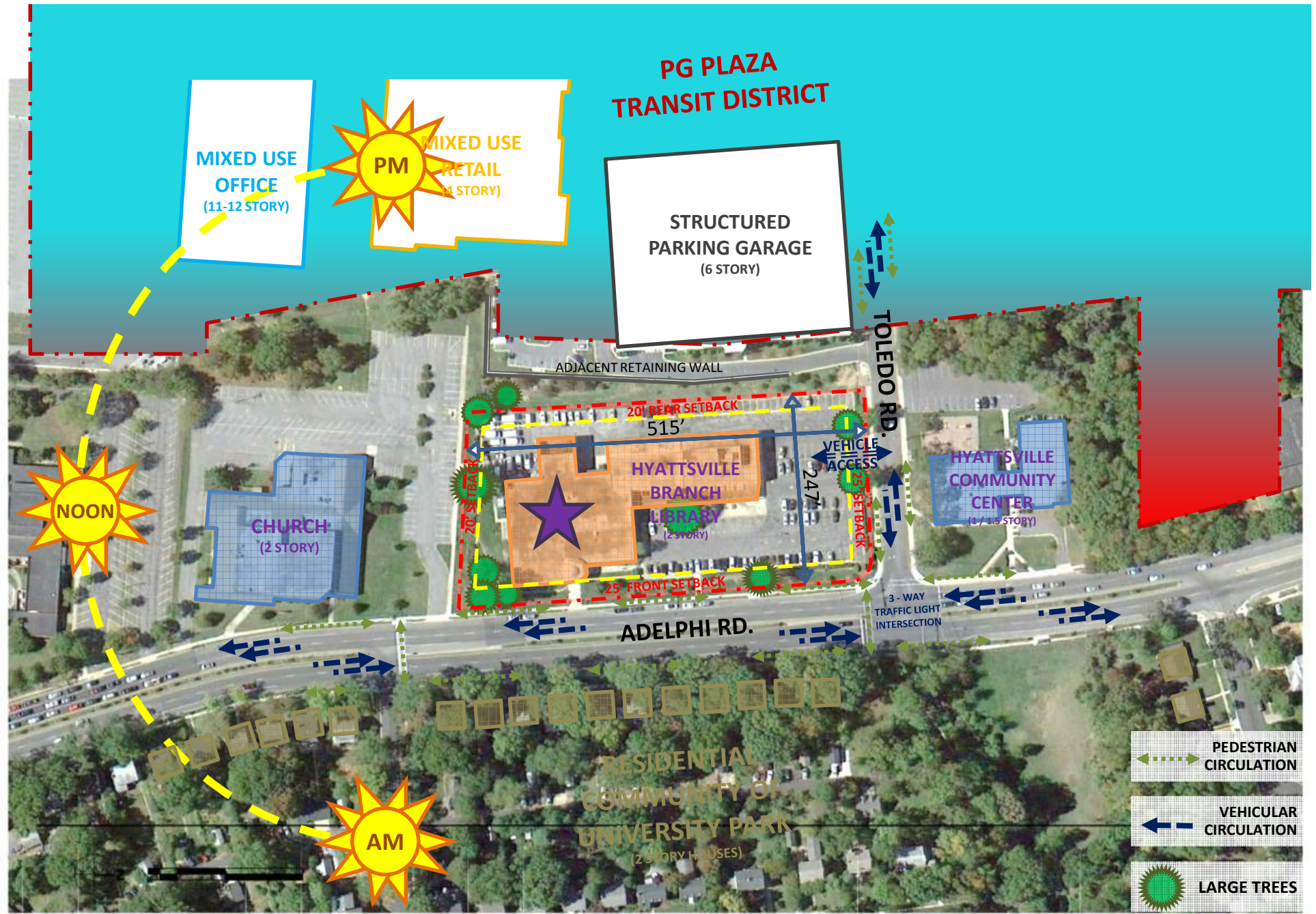
Existing Building



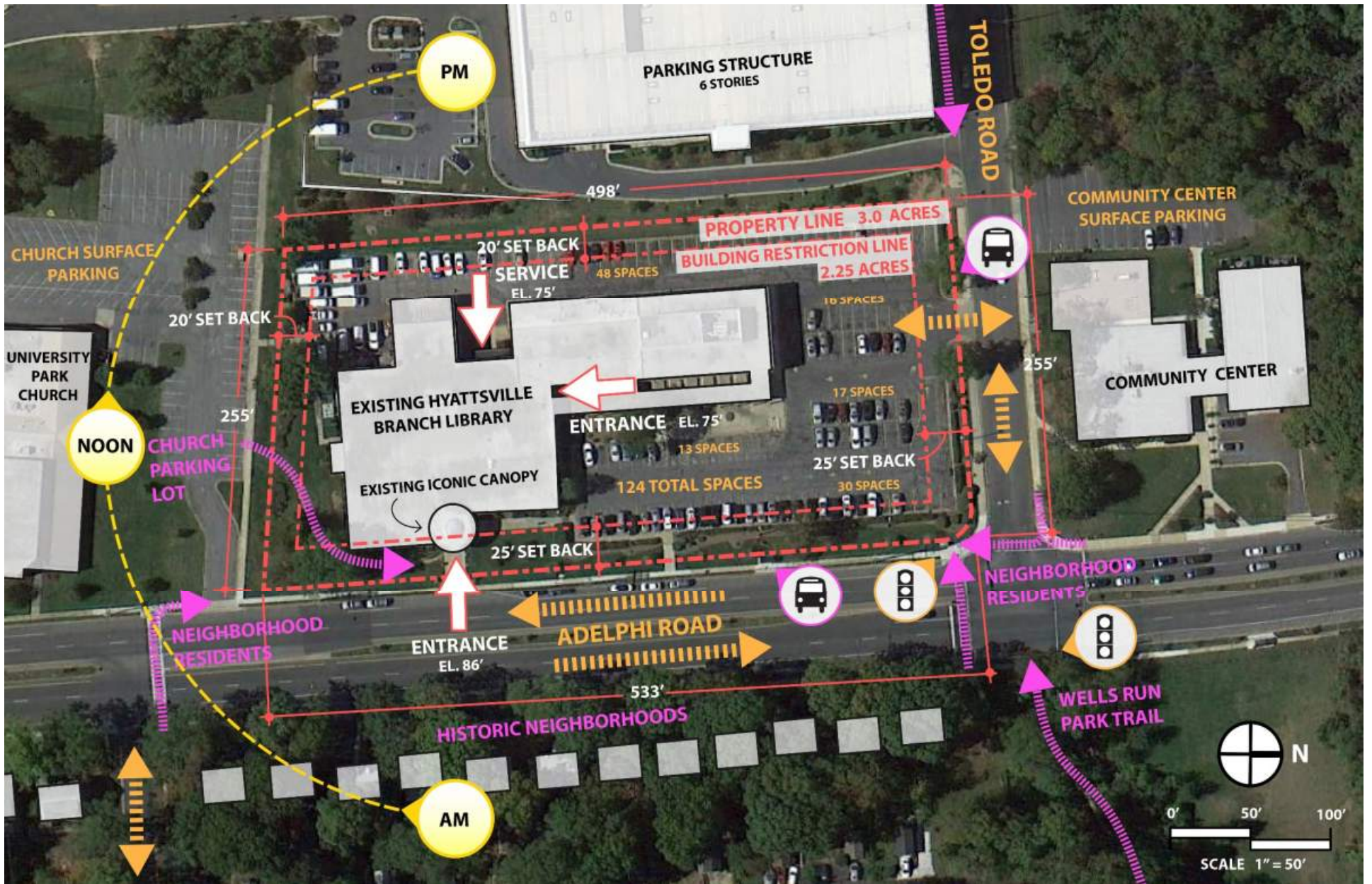
Site Planning Goals

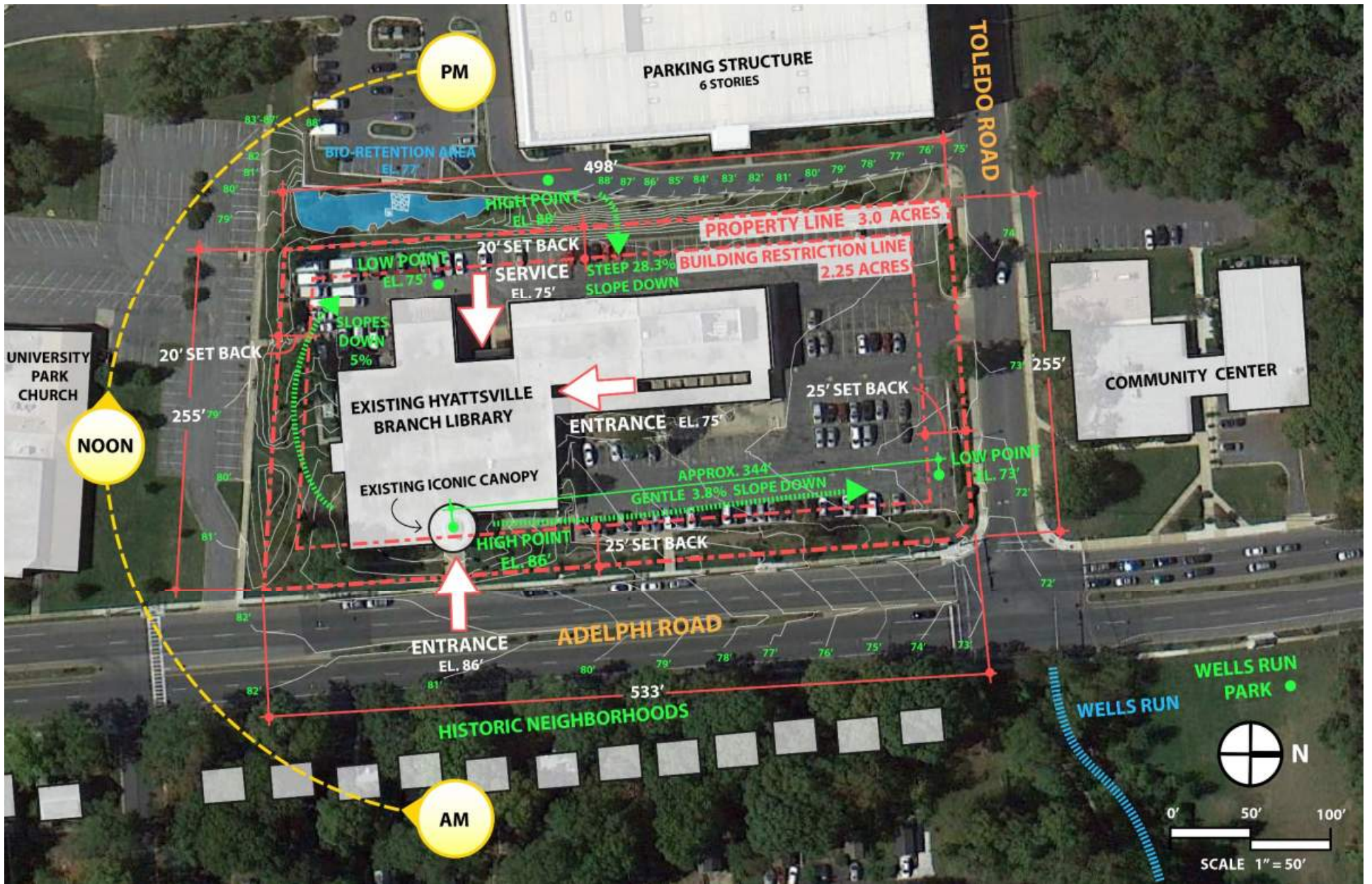
- Maximize Opportunities
- Minimize Constraints
- Accessibility for Cars + People
- Visibility + Prominence for Building
- Clear Site Entrance
- Safe Access + Exit for All Vehicles
- Separate Service Areas
- Screen Parking Areas
- Separate Cars + Pedestrians





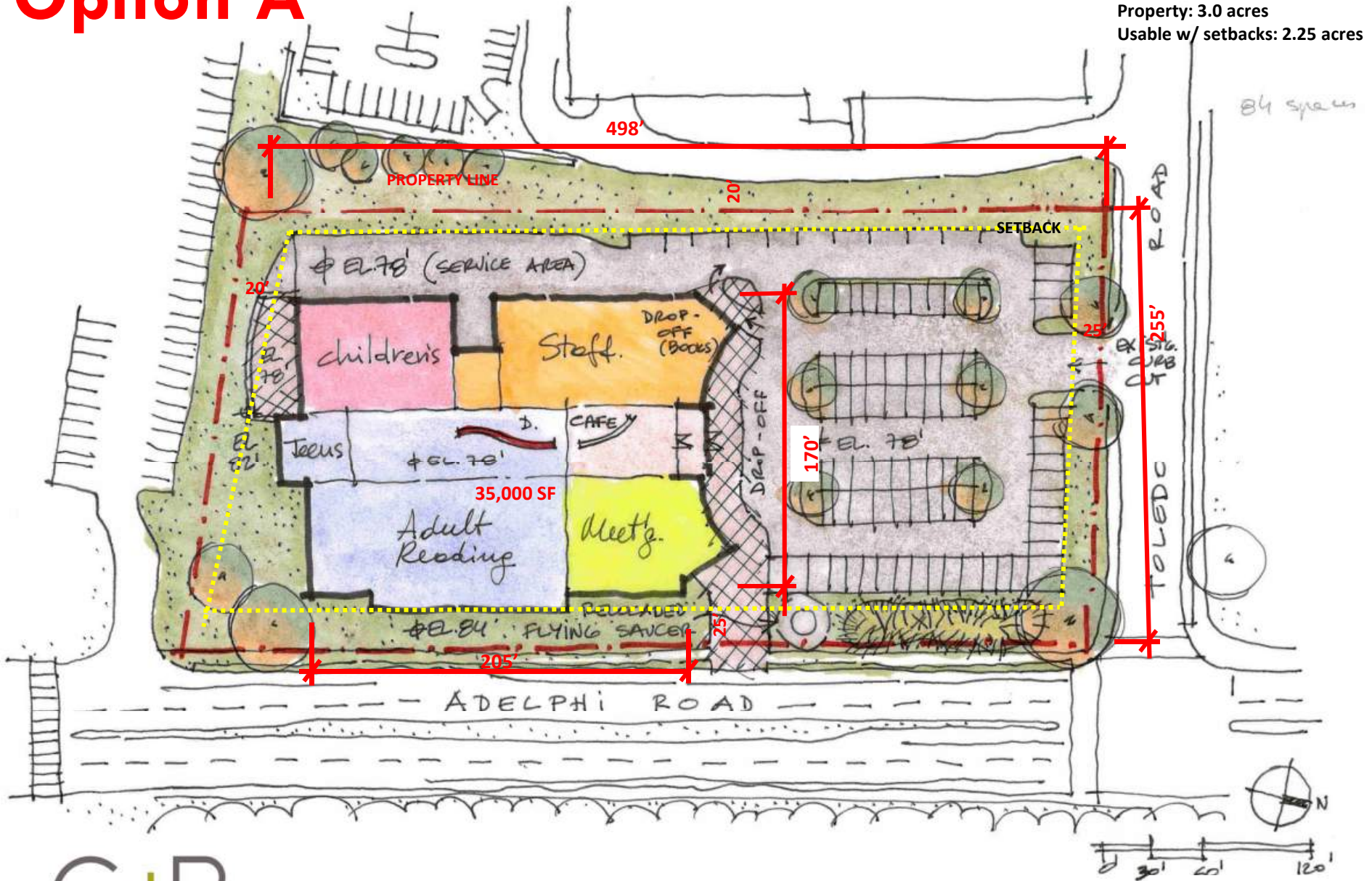
HYATTSVILLE BRANCH LIBRARY – SITE ANALYSIS



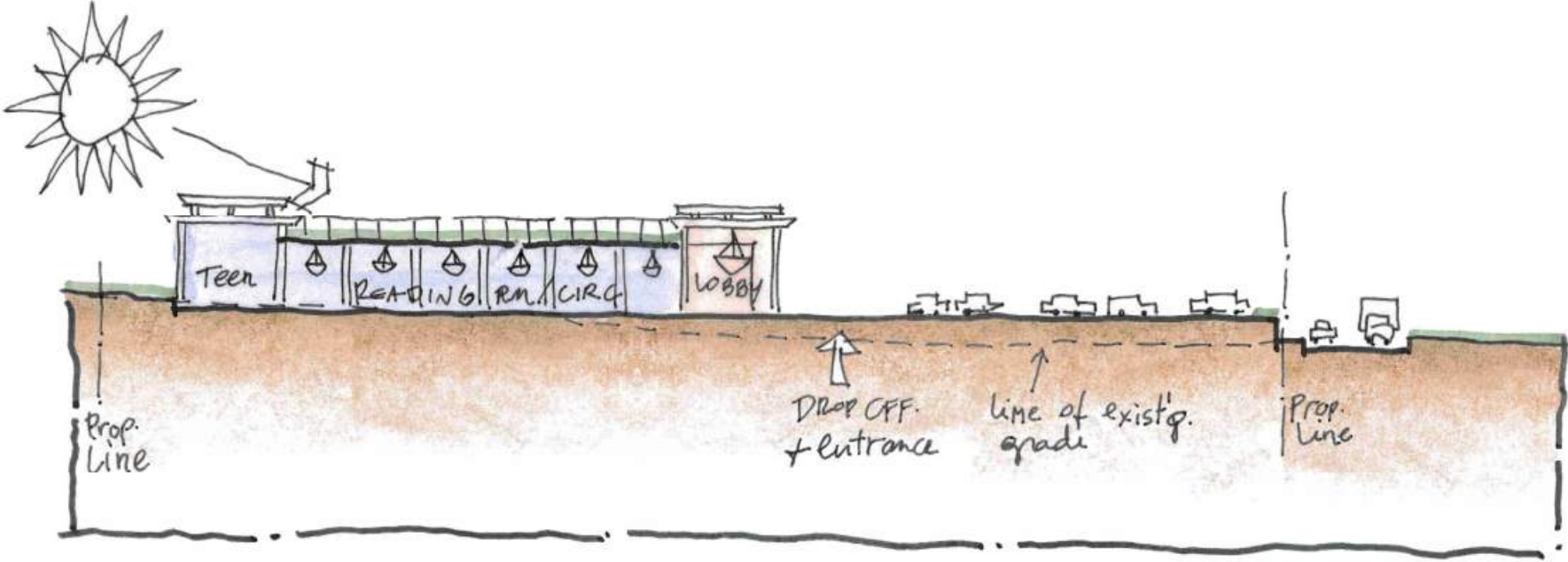


Option A

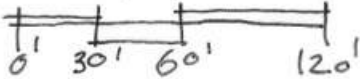
Property: 3.0 acres
Usable w/ setbacks: 2.25 acres



Option A

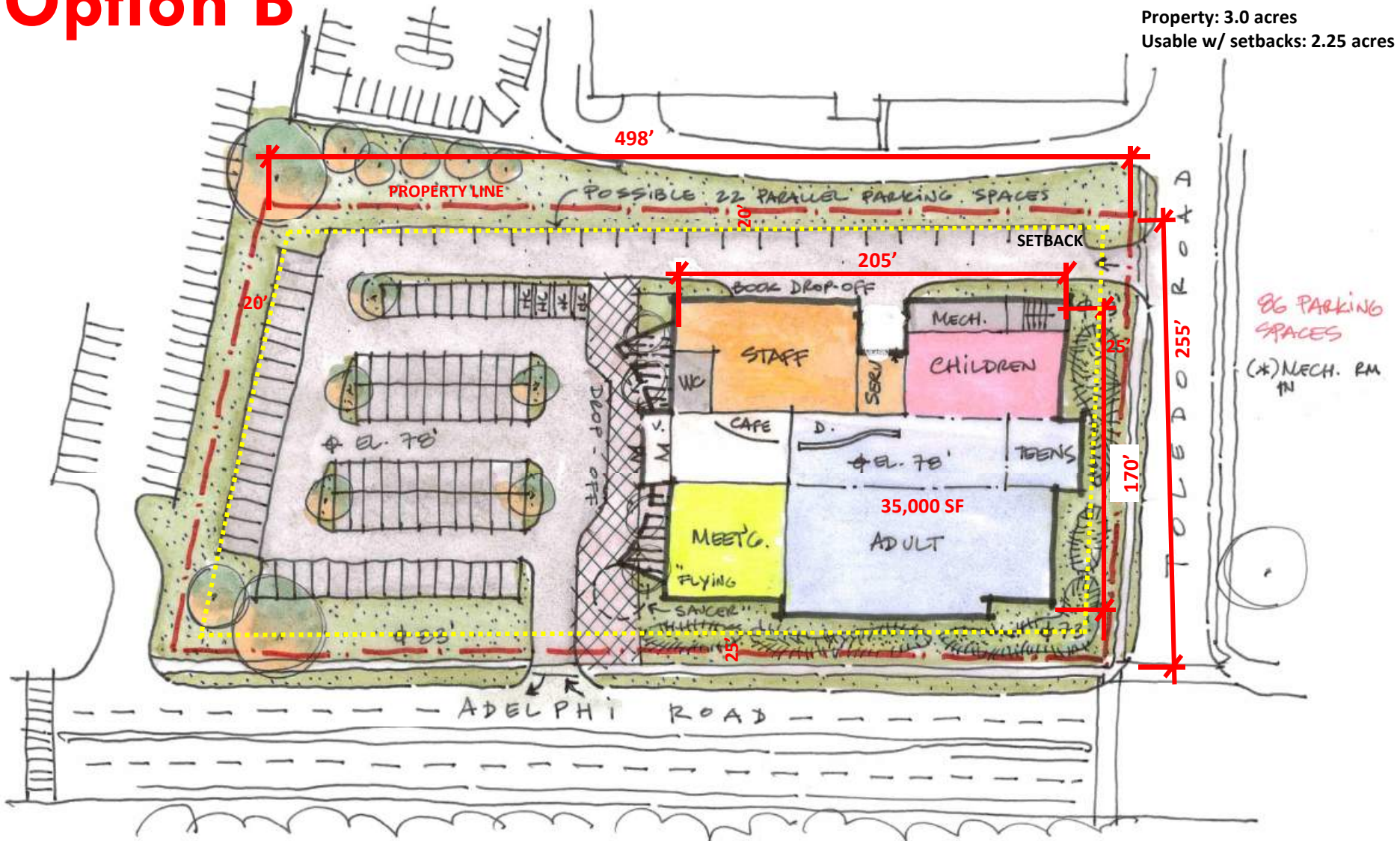


Option A - NORTH/SOUTH SECTION



Option B

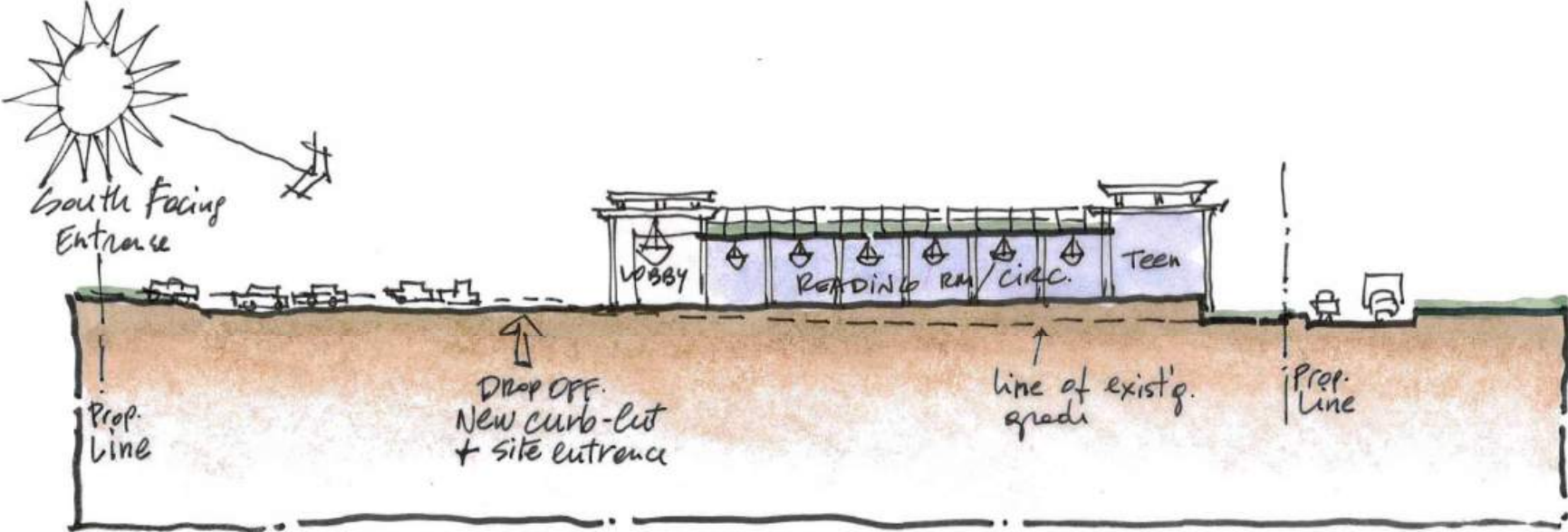
Property: 3.0 acres
Usable w/ setbacks: 2.25 acres



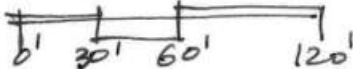
86 PARKING SPACES
(*MECH. RM IN

Option B

Option B

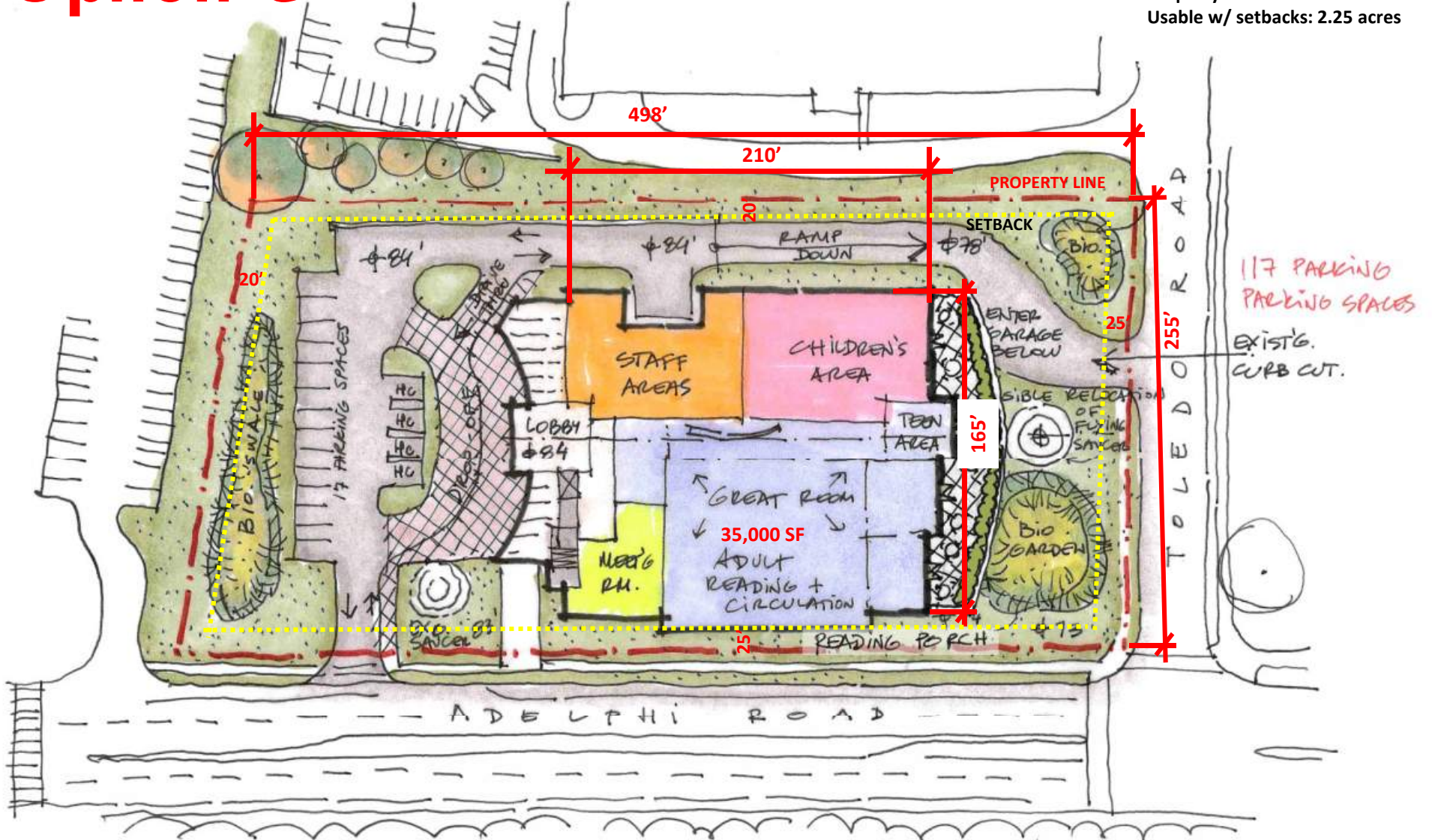


Option B - NORTH/SOUTH SECTION



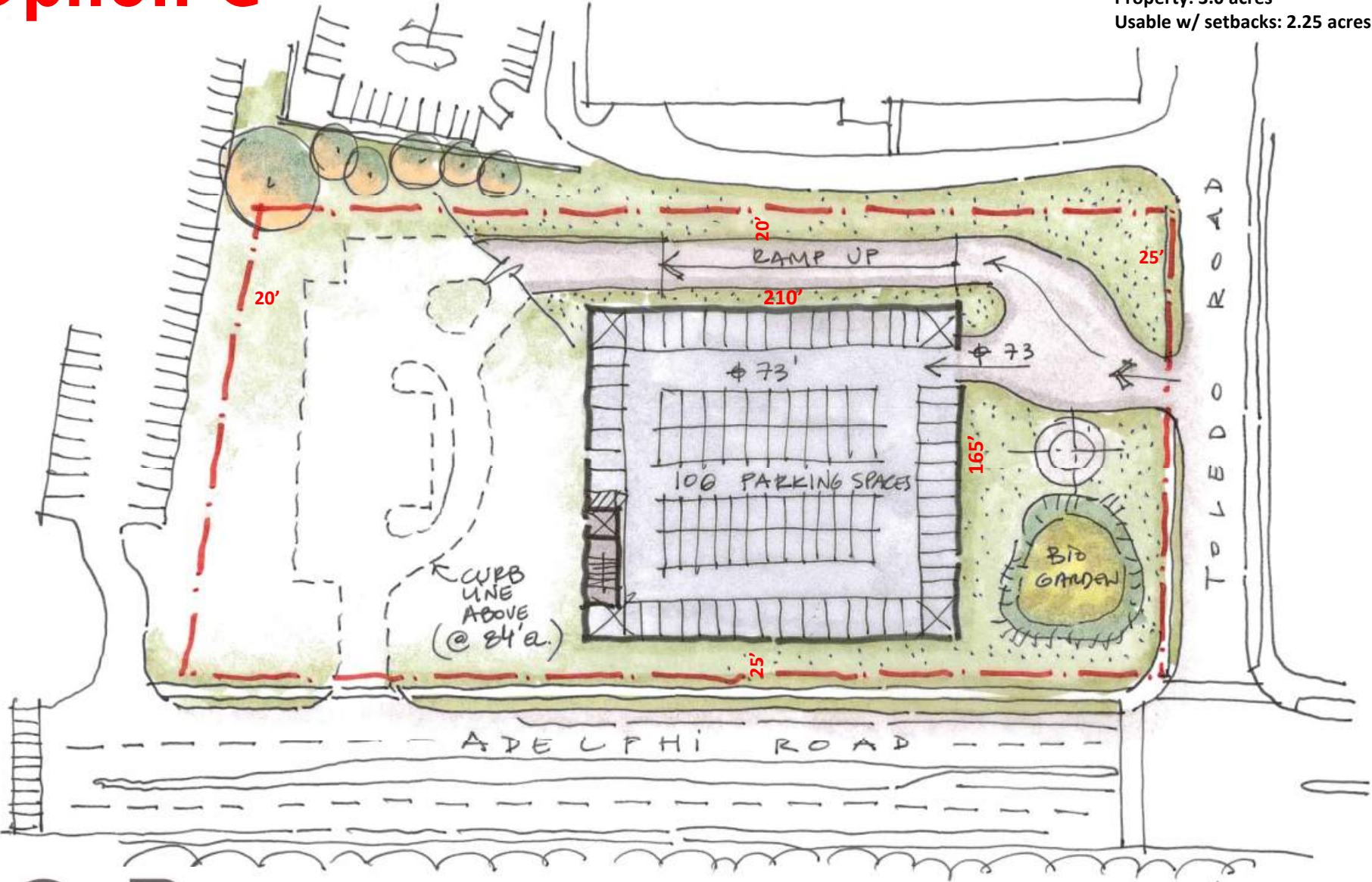
Option C

Property: 3.0 acres
Usable w/ setbacks: 2.25 acres

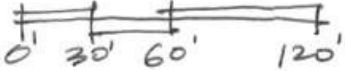


Option C

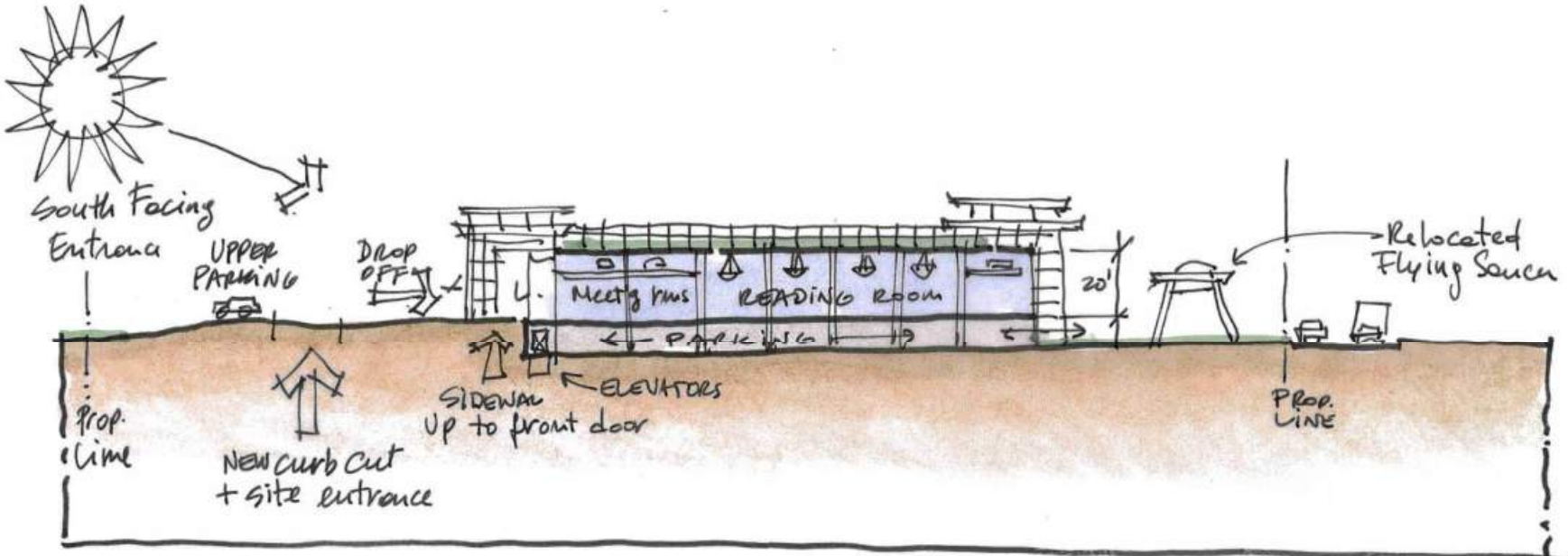
Property: 3.0 acres
Usable w/ setbacks: 2.25 acres



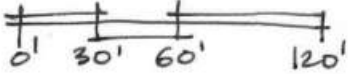
Option C

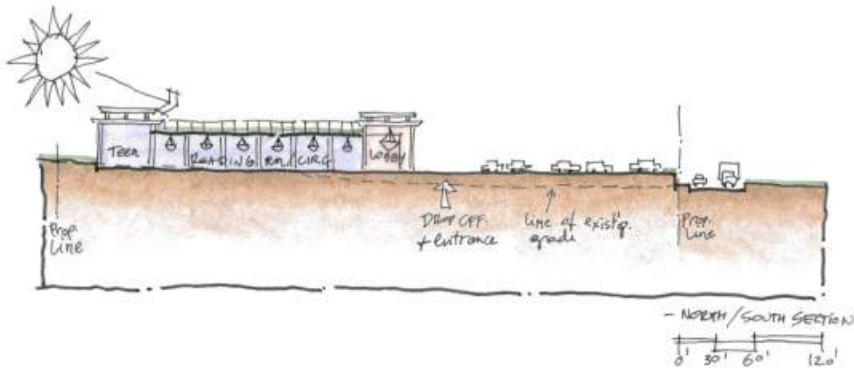


Option C

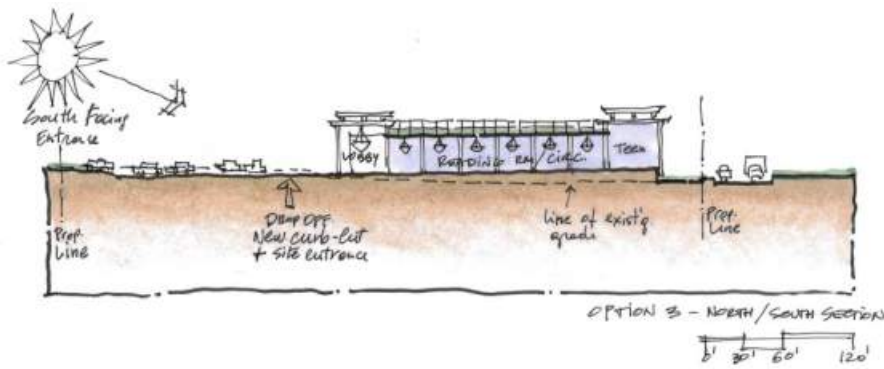
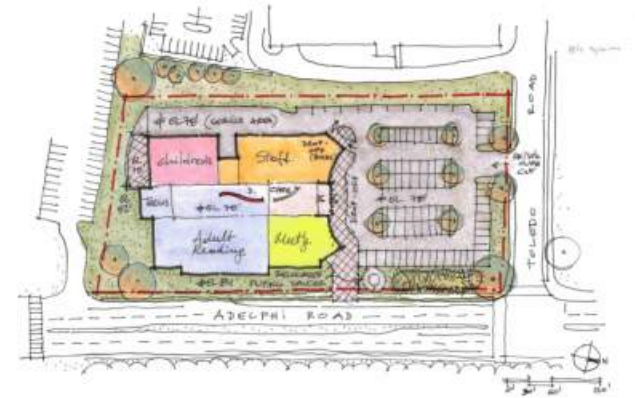


Option C - NORTH/SOUTH SECTION

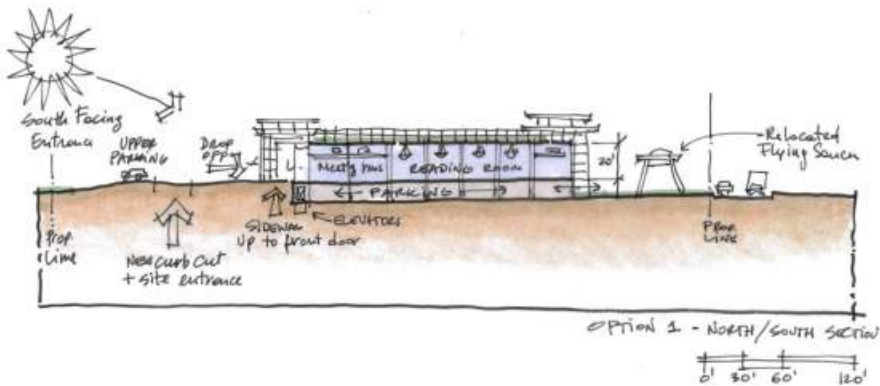




Option A



Option B



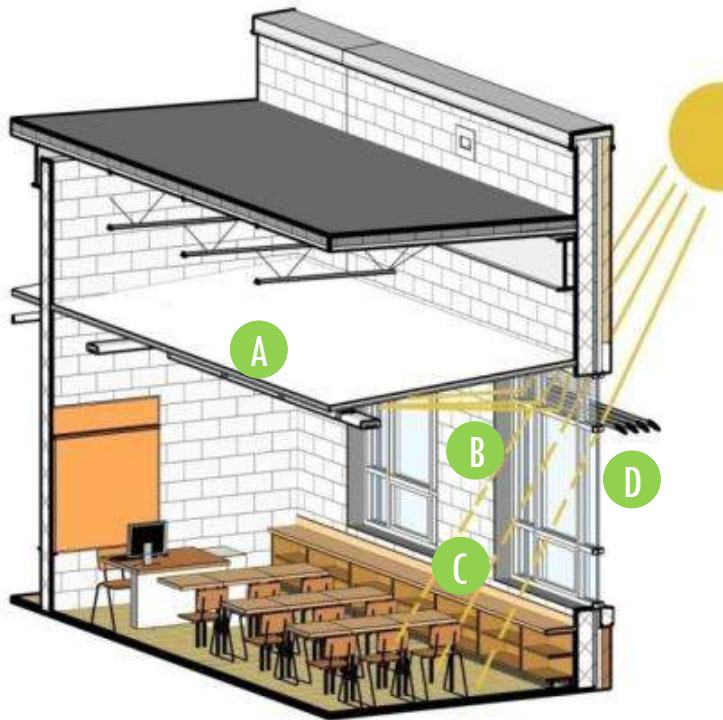
Option C



Sustainable Strategies

Natural Daylighting

- A Sloped ceilings and pendant lights
- B Interior light louvers or deep roof overhangs in upper window bounce light
- C Translucent roller shades cut glare from sun
- D Exterior sun-shelves reduce glare from southern sun



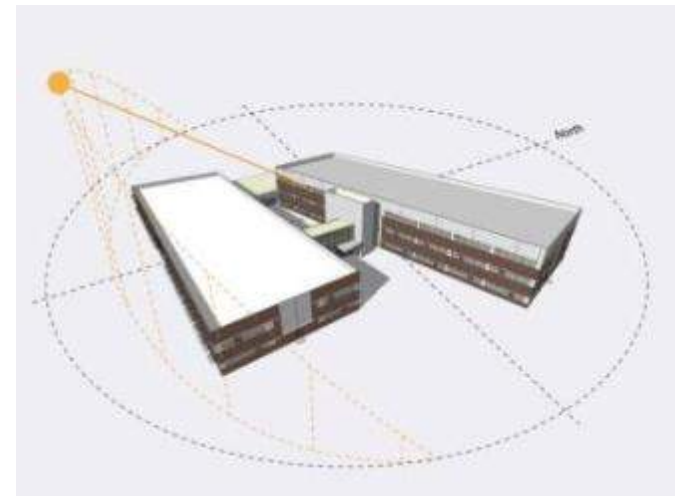
Sustainable Strategies

Energy/Water Efficiency

- Efficient building envelop to optimize the insulation (R-values) for wall and roof assemblies.
- Energy-Star roof to reflect rays and reduce heat island effect
- High efficient packaged roof top units
- Dimming, multiple switching, daylight and vacancy sensors to be considered.
- Water-efficient plumbing fixtures such as low-flow toilets, and urinals, can save more water than a typical building baseline.
- Improved energy performance helps reduce operating costs.

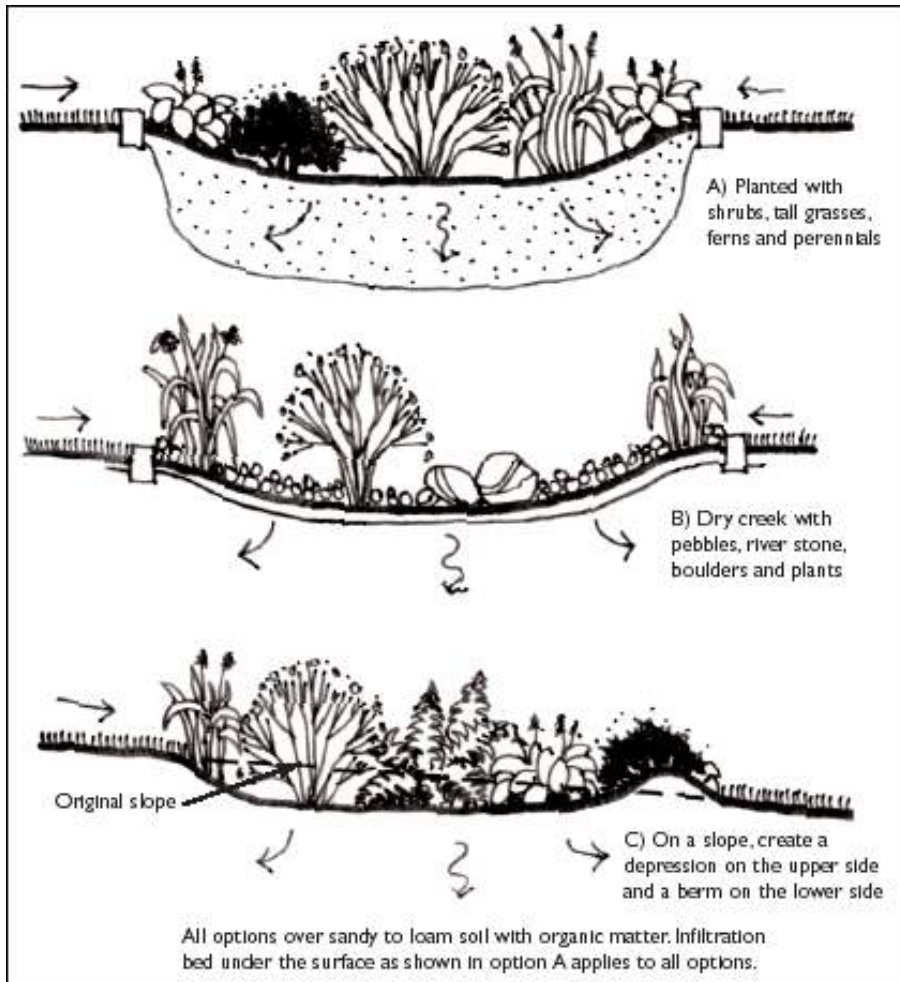


Every
DRIP
counts



Sustainable Strategies

Rain Gardens/Bio Retention



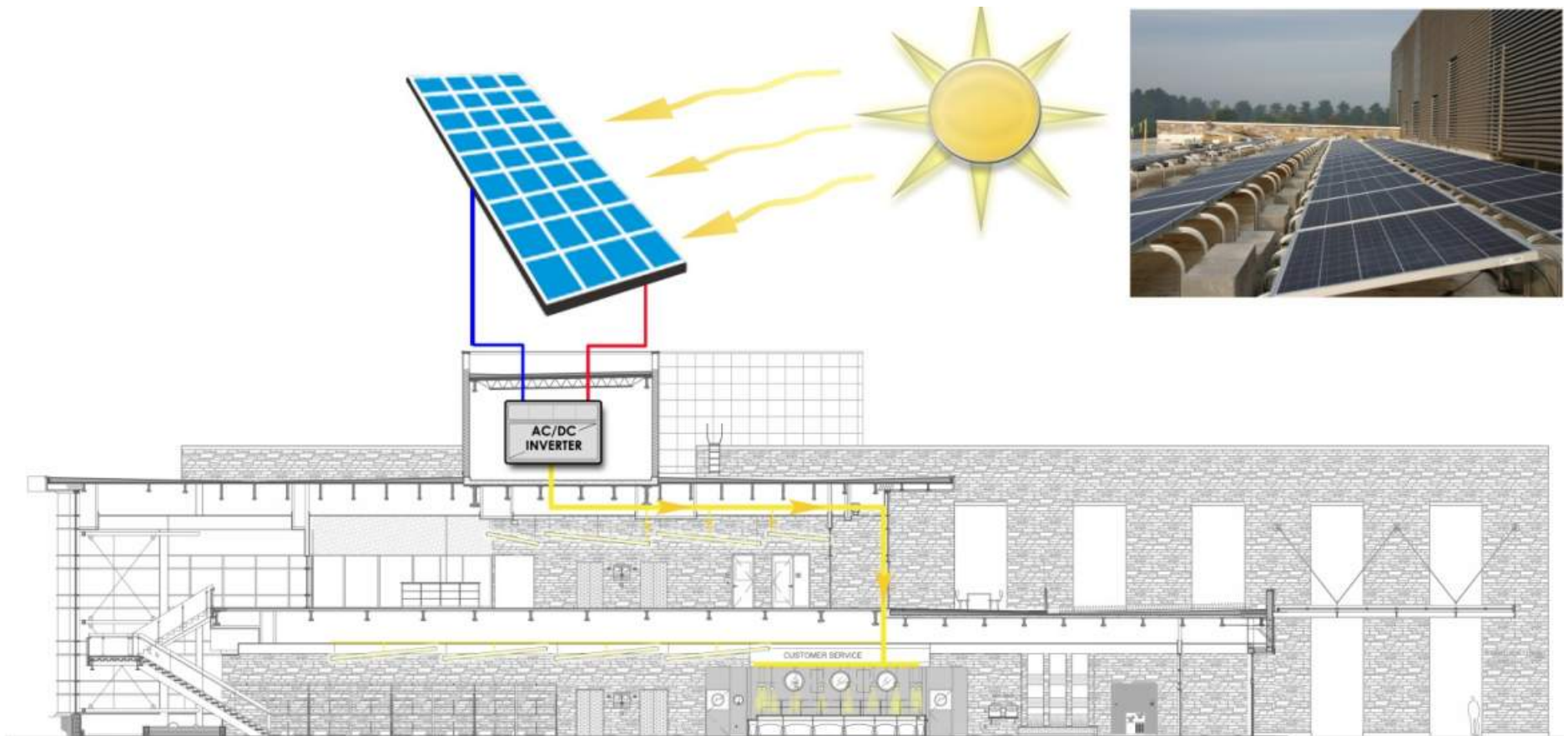
PRECEDENTS FOUND VIA INTERNET SEARCH, VARIOUS SOURCES

Sustainable Strategies

Photovoltaic Panels

A. Solar Electricity Collection

B. Solar Hot Water Systems



Miller Library, Grimm + Parker

Sustainable Strategies

Green Roof Systems



MILLER LIBRARY, GRIMM + PARKER



BOWIE STATE STUDENT UNION, GRIMM + PARKER



BOWIE CITY HALL, GRIMM + PARKER

Sustainable Strategies

Electric Car Charging Stations



Floor Mounted Ballard Stations



Wall Mounted Stations

Sustainable Strategies

Geothermal Wells

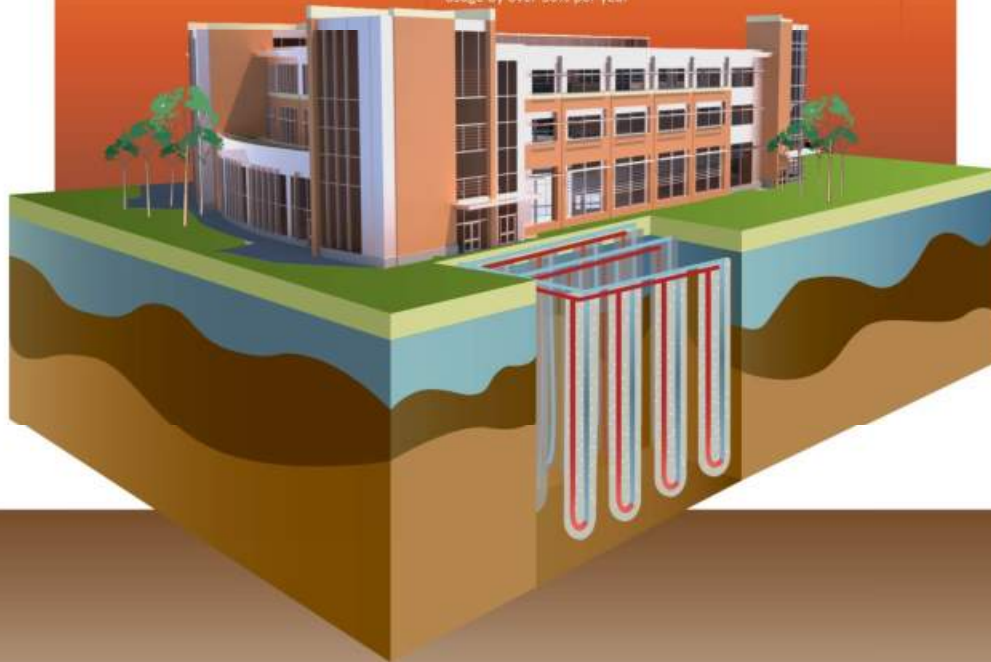
Definitions

geothermal - the word geothermal comes from the Greek words geo (earth) and therme (heat). geothermal energy is heat from within the Earth.

- Heating and cooling equipment is connected to the ground and extracts heat from the ground to use in the building during the cold season. During the summer, heat from the building is stored in the ground.

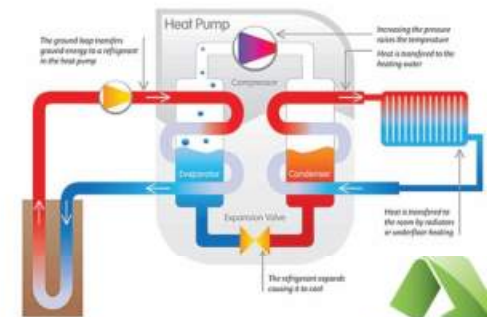
ground source heat pumps use the earth beneath your feet as a thermal storage battery.

geothermal ground source heat system reduces energy usage by over 30% per year



Geothermal Well

This school's mechanical system has many names – geothermal heat pump, ground source heat pump (GSHP) are just two of them. Simply, it's a central heating and cooling system that pumps heat to and from the ground and uses stable ground temperatures near the Earth's surface to control building temperatures above ground. 80 wells were drilled 400-feet deep in a 20-foot by 20-foot grid under the lawn to the south of the Arts and Sciences building. The closed-loop piping is connected to heat pumps located above the ceiling throughout the building. Teachers can control the temperature in their classrooms and every room saves energy.



Public Comments - August 13, 2013

Program

- Expand services, book collection and computers.
- Provide vibrant spaces for learning, interaction, and private reflection
- Welcoming to all ages and cultures

Community

- “Saucer” is an important architectural feature and a community icon
- Library should interact physically and programmatically with surrounding buildings and community
- Sustainable and environmentally friendly

Accessibility

- Universally accessible for all people, regardless of their disabilities
- Friendly and easily navigable for pedestrians, bicycles, and vehicles
- Open feeling- not overwhelmed with large stacks in narrow rows

Community Ideas & Input

Today's discussion:

What Would Make
This Project a Success
for You?



Future Community Meetings:

- Tuesday September 16th – 7 to 9 pm
Hyattsville Branch Library



Public Meeting- August 13, 2013

DRAFT of Design Guiding Principles

- Design a welcoming facility that provides the community and staff with cutting edge programs, vast book collection, flexible spaces and access to state-of-the-art technology.
- Create an accessible building for all people: universally friendly to everyone regardless of their age, health, or background.
- Provide a beautiful, inspiring, sustainable facility that is not only a mark of pride for the community but is efficient and educational.
- Preserve the existing “Saucer” and celebrate the iconic form by integrating it into the new design.