


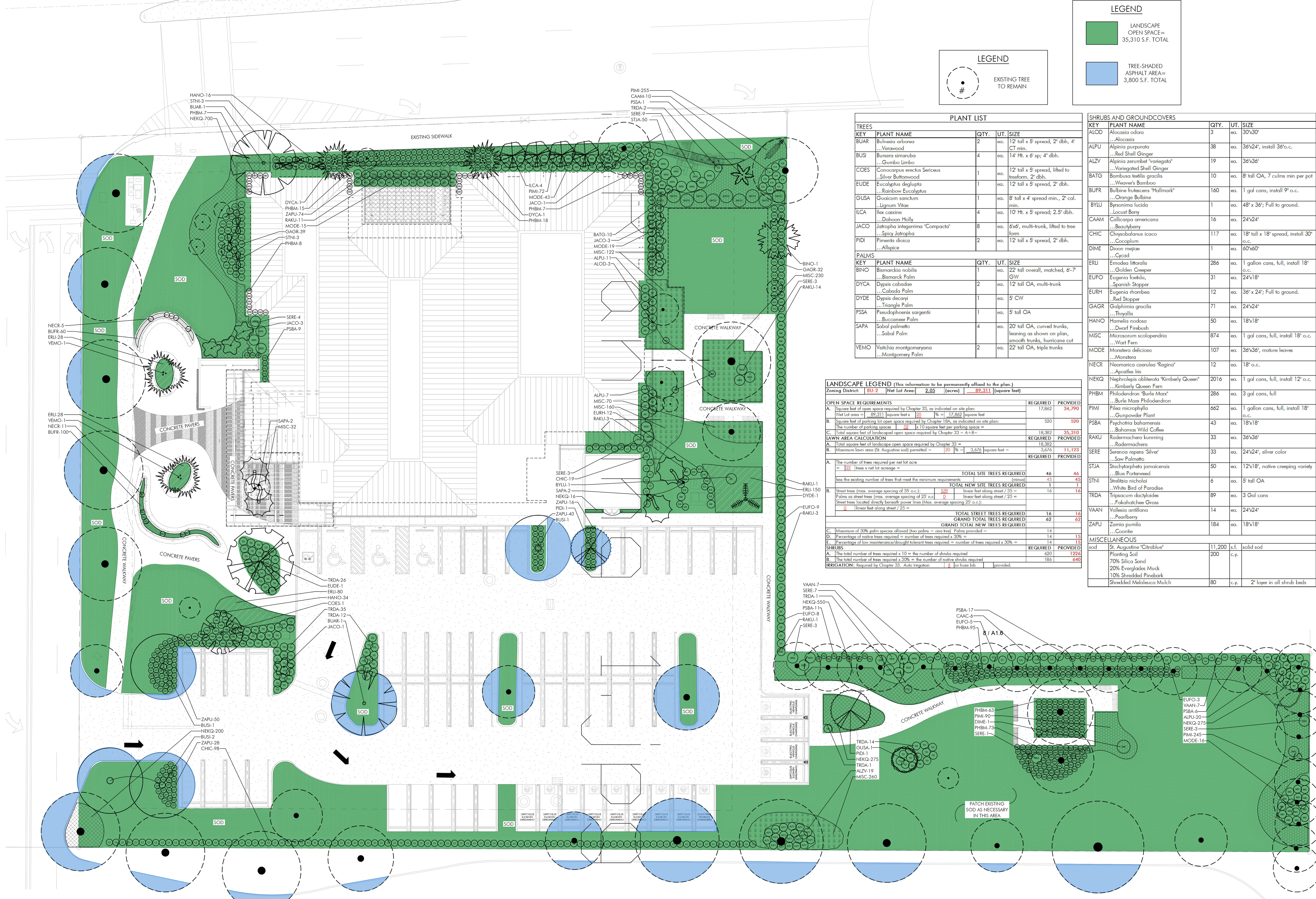


**LEGEND**

	LANDSCAPE OPEN SPACE= 35,310 S.F. TOTAL
	TREE-SHADED ASPHALT AREA= 3,800 S.F. TOTAL

**LEGEND**

	EXISTING TREE TO REMAIN
---	-------------------------



**PLANT LIST**

KEY	PLANT NAME	QTY.	UT.	SIZE
BUAR	Bursera simaruba ...Verawood	2	ea.	12' tall x 5' spread, 2" dbh, 4' CT min.
BUSI	Bursera simaruba ...Gumbo Limbo	4	ea.	14' Ht. x 6' sp; 4" dbh.
COES	Conocarpus erectus Sericeus ...Silver Buttonwood	1	ea.	12' tall x 5' spread, lifted to treeform, 2" dbh.
EUDE	Eucalyptus deglupta ...Rainbow Eucalyptus	1	ea.	12' tall x 5' spread, 2" dbh.
GUSA	Guaiacum sanctum ...Lignum Vitae	1	ea.	8' tall x 4' spread min., 2" cal. min.
ILCA	Ilex cassine ...Dahoon Holly	4	ea.	10' Ht. x 5' spread; 2.5" dbh.
JACO	Jatropha integririma 'Compacta'	8	ea.	6'x6', multi-trunk, lifted to tree form
PIDI	Pimenta dioica ...Allspice	2	ea.	12' tall x 5' spread, 2" dbh.
KEY	PLANT NAME	QTY.	UT.	SIZE
BINO	Bismarckia nobilis ...Bismarck Palm	1	ea.	22' tall overall, matched, 6-7' GW
DYCA	Dypsis cabardae ...Cabada Palm	2	ea.	12' tall OA, multi-trunk
DYDE	Dypsis decaryi ...Triangle Palm	1	ea.	5' CW
PSSA	Pseudophoenix sargentii ...Buccaneer Palm	1	ea.	5' tall OA
SAPA	Sabal palmetto ...Sabal Palm	4	ea.	20' tall OA, curved trunks, leaning as shown on plan, smooth trunks, hurricane cut
VEMO	Veitchia montgomeryana ...Montgomery Palm	2	ea.	22' tall OA, triple trunks

**LANDSCAPE LEGEND (this information to be permanently affixed to the plan.)**

Zoning District:	BU-2	Net Lot Area:	2.05 (acres)	89,311 (square feet)
<b>OPEN SPACE REQUIREMENTS</b>				
A. Square feet of open space required by Chapter 33, as indicated on site plan:	REQUIRED	PROVIDED		
Net Lot area = 89,311 square feet x .20 = 17,862 square feet	17,862	34,790		
B. Square feet of parking lot open space required by Chapter 18A, as indicated on site plan:	REQUIRED	PROVIDED		
The number of parking spaces: 182 x 10 square feet per parking space =	1,820	500		
C. Total square feet of landscaped open space required by Chapter 33 = A + B =	18,382	35,310		
<b>LAWN AREA CALCULATION</b>				
A. Total square feet of landscape open space required by Chapter 33 =	18,382	PROVIDED		
B. Maximum lawn area (Gr. Augmented soil) permitted = .20 % =	3,676	11,123		
<b>TREES</b>				
A. The number of trees required per net lot acre = 22 trees x net lot acreage =	46	46		
less the existing number of trees that meet the minimum requirements (minus)	45	45		
<b>TOTAL NEW SITE TREES REQUIRED</b>	1	1		
B. Street trees (max. average spacing of 35' o.c.):	509	16		
Palms as street trees (max. average spacing of 25' o.c.):	9	16		
Street trees located directly beneath power lines (Max. average spacing 25' o.c.):	0	16		
<b>TOTAL STREET TREES REQUIRED</b>	16	16		
<b>GRAND TOTAL TREES REQUIRED</b>	62	62		
<b>SHRUBS</b>				
A. Maximum of 30% palm species allowed (two palms = one tree) Palms provided =	14	14		
B. Percentage of native trees required = number of trees required x 30% =	14	15		
E. Percentage of low maintenance/drought tolerant trees required = number of trees required x 30% =	14	15		
<b>TOTAL SHRUBS REQUIRED</b>	186	186		
<b>GRAND TOTAL NEW TREES REQUIRED</b>	186	186		
<b>MISCELLANEOUS</b>				
sod	St. Augustine 'Citriblue'	11,200	s.f.	solid sod
	Planting Soil	200	c.y.	
	70% Silica Sand			
	20% Everglades Muck			
	10% Shredded Pinebark			
	Shredded Melaleuca Mulch	80	c.y.	2" layer in all shrub beds

**SHRUBS AND GROUNDCOVERS**

KEY	PLANT NAME	QTY.	UT.	SIZE
ALOD	Alcornoeca odora ...Alcornoeca	3	ea.	30"x30"
ALPU	Alpinia purpurata ...Red Shell Ginger	38	ea.	36"x24", install 36"o.c.
ALZV	Alpinia zerumbet 'variegata' ...Variegated Shell Ginger	19	ea.	36"x36"
BATG	Bambusa textilis gracilis ...Weaver's Bamboo	10	ea.	8' tall OA, 7 culms min per pot
BUFR	Bulbine frutescens 'Hallmark' ...Orange Bulbine	160	ea.	1 gal cans, install 9" o.c.
BYLU	Byronima lucida ...Locust Berry	1	ea.	48" x 24"; Full to ground.
CAAM	Callicarpa americana ...Beautyberry	16	ea.	24"x24"
CHIC	Chrysobalanus icaco ...Cocoplum	117	ea.	18" tall x 18" spread, install 30" o.c.
DIME	Dioon mejiae ...Cycad	1	ea.	60"x60"
ERLU	Erinodes litoralis ...Golden Creeper	286	ea.	1 gallon cans, full, install 18" o.c.
EUF0	Eugenia foenicula, ...Spanish Stopper	31	ea.	24"x18"
EURH	Eugenia rhambea ...Red Stopper	12	ea.	36" x 24"; Full to ground.
GAGR	Galphimia gracilis ...Thyallis	71	ea.	24"x24"
HANO	Hamelia nodosa ...Dwarf Firebush	50	ea.	18"x18"
MISC	Microsorium scolopendria ...Wart Fern	874	ea.	1 gal cans, full, install 18" o.c.
MODE	Monstera deliciosa ...Monstera	107	ea.	36"x36", mature leaves
NECR	Neomarcia caerulea 'Regina' ...Apostles Iris	12	ea.	18" o.c.
NEKQ	Nephrolepis obliterata 'Kimberly Queen' ...Kimberly Queen Fern	2016	ea.	1 gal cans, full, install 12" o.c.
PHBM	Philodendron 'Burlie Marx' ...Burlie Marx Philodendron	286	ea.	3 gal cans, full
PIMI	Pilea microphylla ...Gunpowder Plant	662	ea.	1 gallon cans, full, install 18" o.c.
PSBA	Psychotria bahamensis ...Bahamas Wild Coffee	43	ea.	18"x18"
RAKU	Radermachera kunming ...Radermachera	33	ea.	36"x36"
SERE	Sereenoa repens 'Silver' ...Silver Palm	33	ea.	24"x24", silver color
STJA	Stachytarpheta jamaicensis ...Blue Porterweed	50	ea.	12"x18", native creeping variety
STNI	Strelitzia nicholai ...White Bird of Paradise	6	ea.	5' tall OA
TRDA	Tripsacum dactyloides ...Fakahatchee Grass	89	ea.	3 Gal cans
VAAN	Vallisneria spiralis ...Papyrus	14	ea.	24"x24"
ZAPU	Zamia pumila ...Coontie	184	ea.	18"x18"