

Getting started using the Epilog Zing 24

Setting up the Laser

1. Turn on Epilog by flipping **power button** on side.
2. Turn on **air filter** by hitting big black button on front. The >> arrow turns the fan on/off. The up/down arrows turn the fan up or down. Always use air filter on full power.
3. Turn on **air assist** by pressing red switch on power strip, which is located to the right of the laser on the floor.
4. Open the glass door and place the material at (0,0) coordinate (top left corner of bed)

Focus the Laser

1. Press the **focus** button on the control pad :



2. Locate the **focus gauge (dongle)** on the horizontal beam. Release the focus gauge from its hook so that it hangs freely. If the focus gauge is touching your material, lower the tray height by repeatedly pressing the down arrow on the control pad until the focus gauge hangs freely.
 3. Adjust the tray height by pressing the up/down arrows on the control pad until your material just barely touches the focus gauge. If the spring on the gauge is bent at all, the tray is too high.
 4. Lightly flick the focus gauge. **It should swing briefly and then stop by touching the material.** If it misses the material, raise the tray and if it is bent, lower the tray.
 5. **Replace the gauge** onto the magnetic latch and press the reset button:
6. The laser is now focused



Prep your File

Vector vs Raster and why it matters

Raster images are images that are made of pixels - like the ones you take with your phone. If you zoom in very closely on one of your photos, you will eventually begin to see the individual square pixels that make up the image. JPG, PNG, GIF and TIFF are all examples of raster image formats.

Vector graphics are not made of pixels; they are made of math and coordinates. You can zoom in very closely on the edge of a vector graphic and it will never look blurry, because it does not use hard-coded pixels to display itself. Therefore, many logos and icons are created as vector graphics; they can easily scale up to be on a billboard and never look blurry along the edges.

This difference is important in the context of laser cutting. The laser cutter can only **cut** along vector lines because they are essentially just coordinates and not pixels.

Raster lines or graphics are **etched** into the surface of the material instead.

Using Adobe Illustrator, you can convert a raster image into a vector image, but you occasionally get unexpected results.

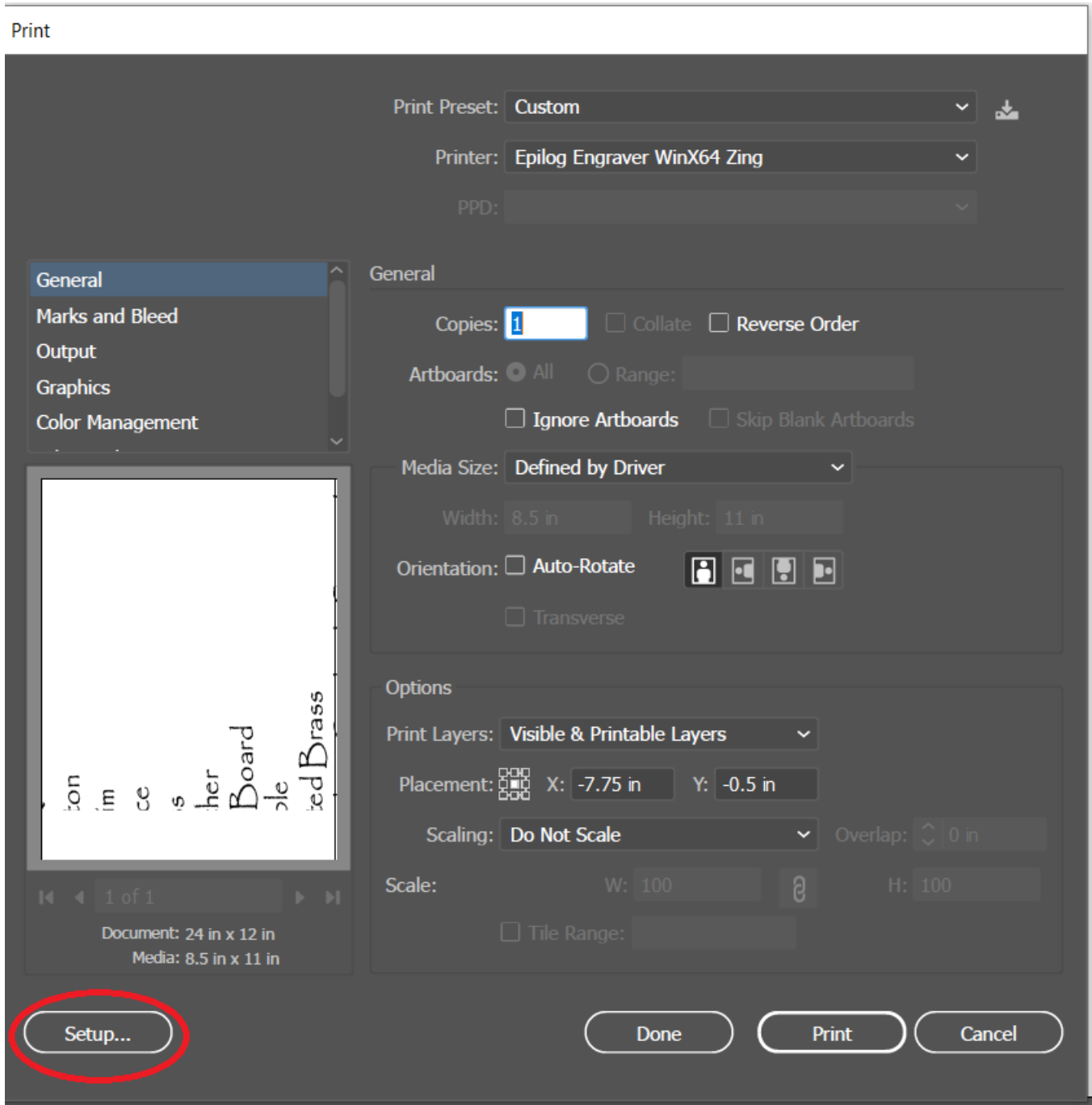
Vector=Cut

Raster=Engrave

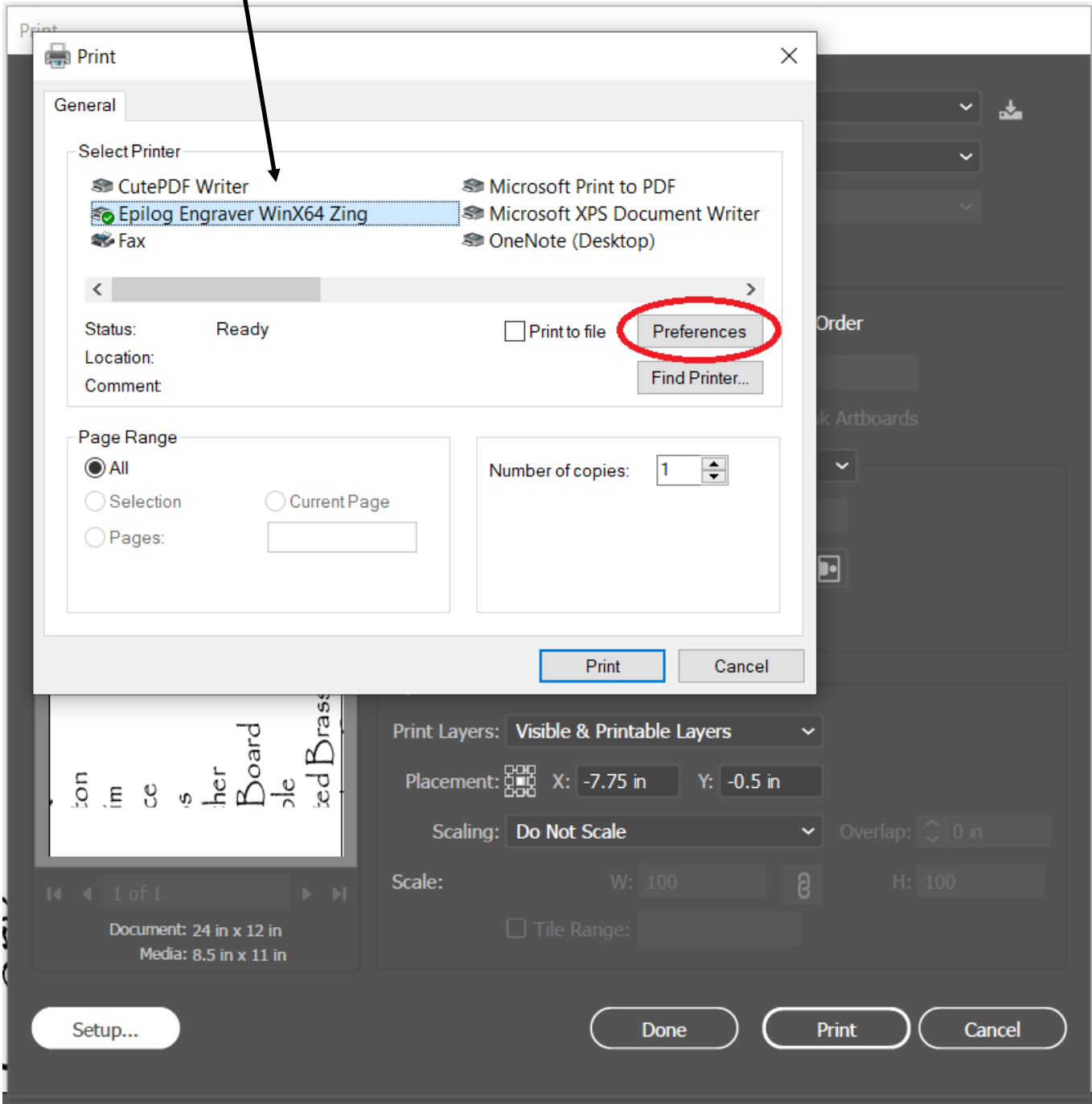
Print Preferences

Give your file a UNIQUE NAME.

When your file is set up in Illustrator, go to File > PrintClick Setup in the bottom left corner of the print window:

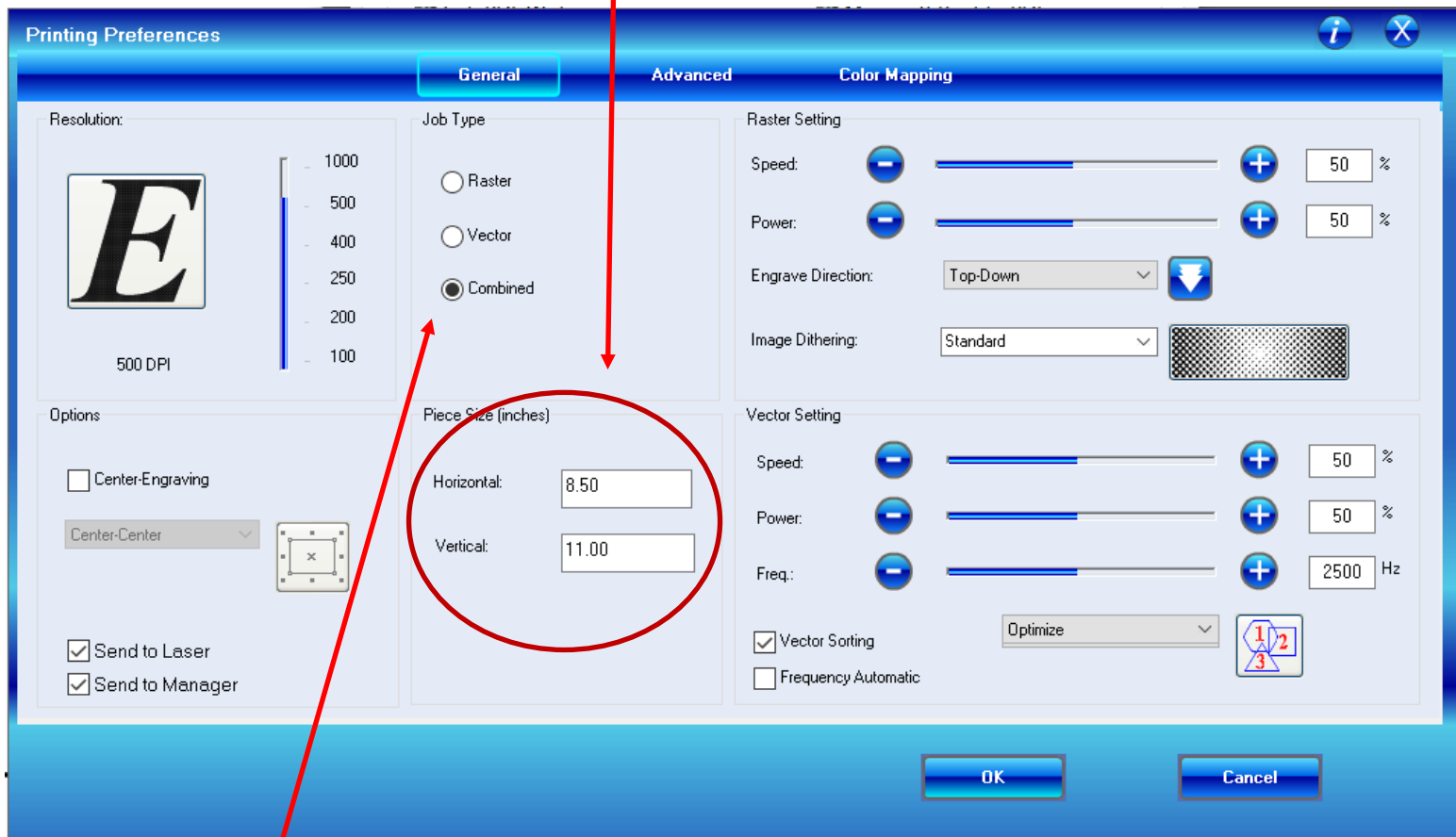


In the new Print window, make sure **Zing** is selected, then click Preferences to open:



This job manager is where you prepare your file for lasering.

Make sure the piece sizes match the project/material you are working with. For best results, make the size match the artboard you used in Illustrator.



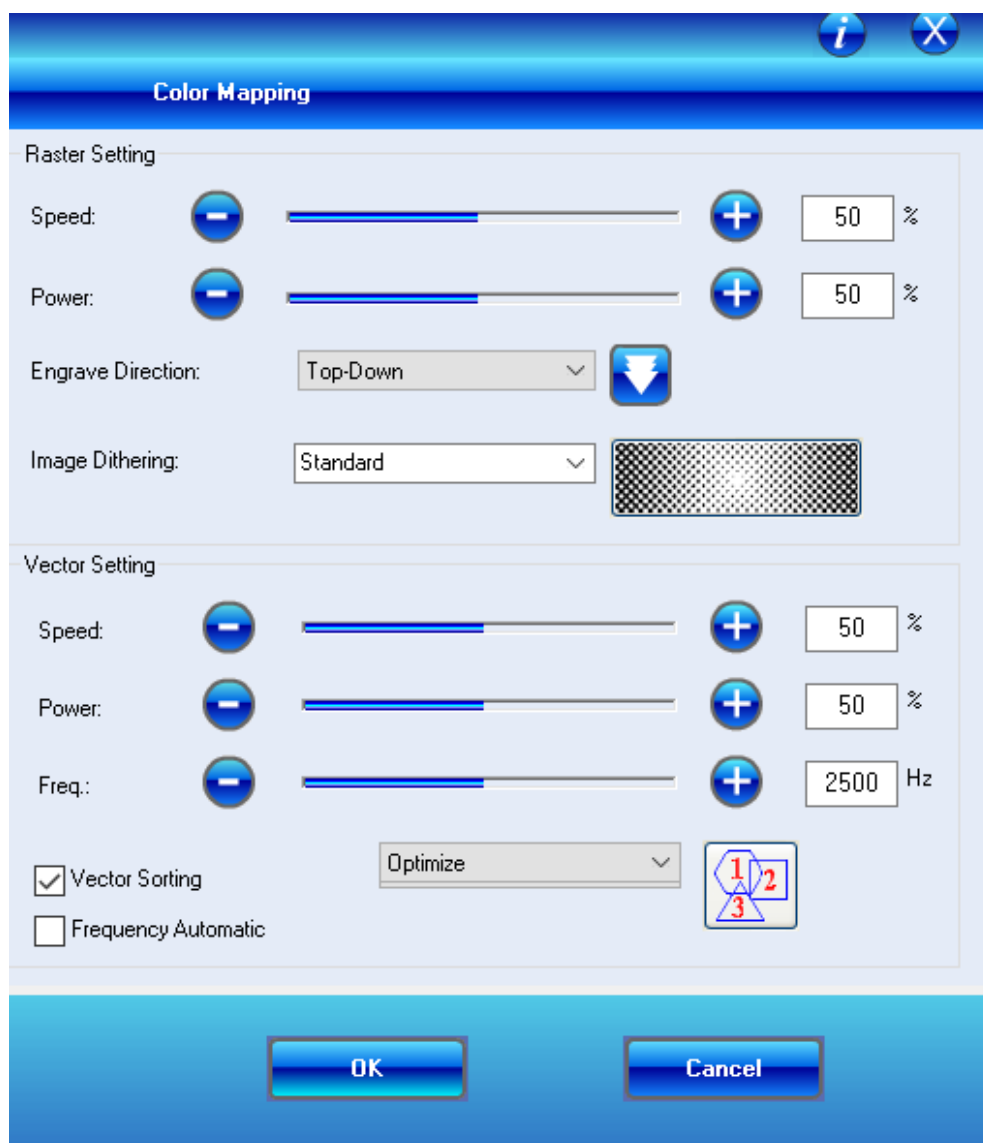
Under Job Type, choose the job type you require:

Choose **Raster** if you only want to engrave

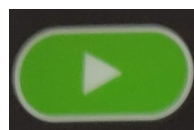
Choose **Vector** if you only want to cut

Choose **Combined** if you want to both engrave AND cut

Input speed, power and frequency settings for raster or vector projects. Refer to **Recommended Settings** on the following pages or poster on the wall.



Once everything is entered, press OK. Your laser job should come up on both the laser and in the Print Manager software. If the material is set up correctly, and your file is correct, pressing the Play/GO button on the laser will start your project.



Center Engraving / Setting a New Home

1) ON the keypad Turn ON the Laser Pointer (#7 Button)



2) Select the Unlock X/Y Button (#8 Button)



3) Physically move the gantry and laser belt until the laser dot lines up with the center of your material or the new homing location.

4) Press the start button to lock the gantry in place.



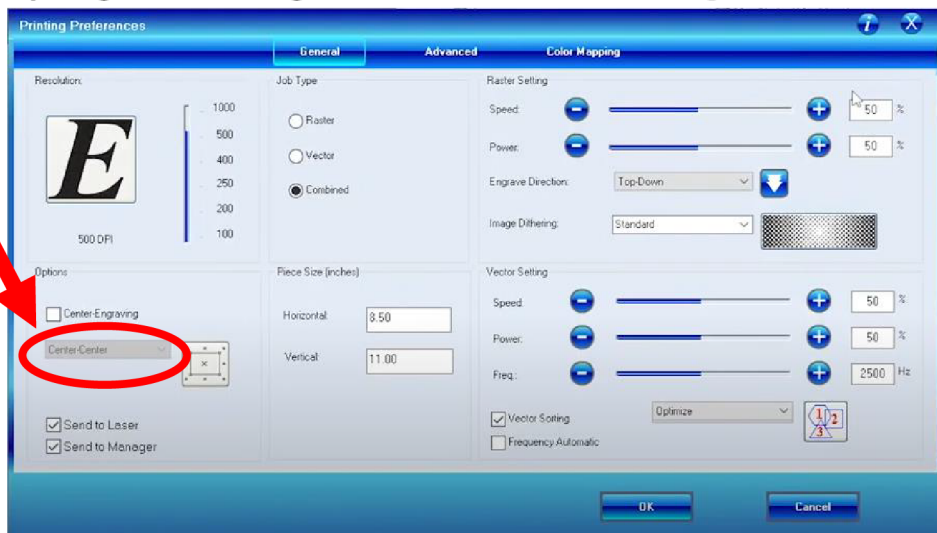
5) Turn OFF the Laser Pointer (#7 Button)



6) Select the Back button to return to the main screen



Epilogue Printing Preference: Center Engrave



Reset Home

1) Select the Unlock X/Y Button (#8 Button)



2) Select the Back button to return to the main screen

