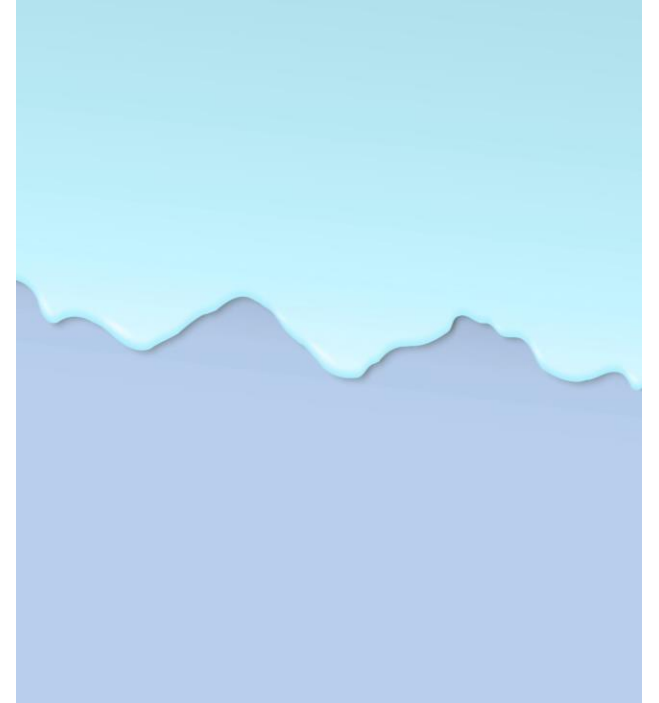


*HEAT PRESS  
AND VINYL  
PRINTER:  
LEARNING LAB*

WELCOME EVERYONE TO THE CENTER FOR  
INNOVATION AT THE FAYETTEVILLE PUBLIC  
LIBRARY!



# *LEARNING LAB?*

- This orientation is what we call a learning lab
- After this class go to the CFI desk so staff can grant you access through your library card so you can use the equipment at a later date
- Those later dates would be Monday/Wednesdays/Fridays and Sundays by appointment or by walk in if available
- The library closes at 5 PM Friday-Sunday and at 8 PM Monday-Thursday

*WHO CAN  
ACCESS  
THESE  
RESOURCES?*

We are very accessible!

- If you live/work in Fayetteville or attend school here
- Live in Rogers/Bentonville or Washington County!
- Anywhere else we have scholarship opportunities that take the cost from \$60 (roughly what residents pay in taxes a year) to \$30
- Different areas require different training, such as the Audio/Video spaces, Laser engravers and 3D printing

# *BOOKING EQUIPMENT*



You can reserve equipment up to 2 weeks out using your library card and PASSWORD, not pin like it says on our website




Reservations are allowed twice a week on equipment with a total of 5 times per month, everything else is on a walk-in basis (as long as no one is using it)



The Roland printer and heat press are not a combo reservation meaning if you reserve one make sure to reserve the other if needed!



Pricing for materials is on our website and you can only print 4 feet per week

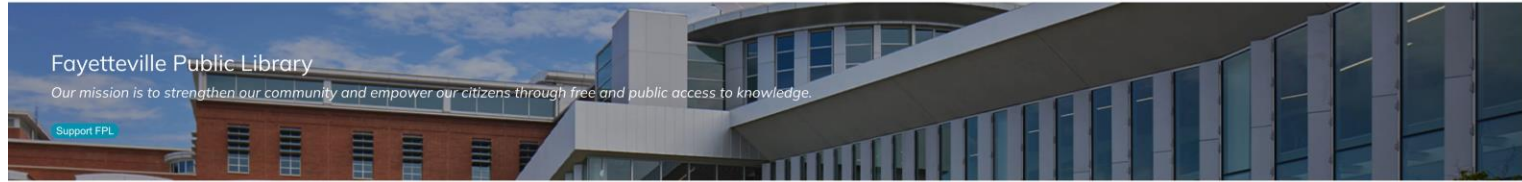


Fayetteville  
Public Library

[My Account](#)
[Pay Fines](#)
[Donate](#)
[Contact](#)

Catalog
Search

[Home](#)
[Borrow & Learn](#)
[Programs & Services](#)
[Events](#)
[Plan Your Visit](#)
[How Do I?](#)




Fayetteville Public Library

Our mission is to strengthen our community and empower our citizens through free and public access to knowledge.

Support FPL

What's Happening at FPL




OUTREACH

Back to School Backpack & School Supplies Drive

July 1-31

FPL is partnering with Arkansas United and Univision for their annual back-to-school supplies drive. We are asking patrons to donate new backpacks and school supplies throughout the whole month of July! Please only donate new, unused items included in the list linked.

View donation list →




LECTURE

Disability & Design – How Design & Technology Can Improve Access

Tuesday, July 11, 12pm

Let's talk about the relationship between disability and design and consider ways that good design paired with assistive technologies can bridge the gap with Roberta Sick and Melanie Thornton from Partners for Inclusive Communities!

Learn more →




ADULT

The Omnipresent Divine of Japan

Wednesday, July 12, 6pm

Join instructor Sari in purifying the space and mind through an offering of Miko Mai (Priestess Dance). Her Shinto (the way of the gods) dance and interactive talk about the indigenous faith of the Japanese people will invite the audience to connect with the divine everywhere.

Learn more →



Register for Summer Reading Club today!

SRC is our way of encouraging everyone to read together all summer long – in whatever form that takes! It could be audiobooks, eBooks, graphic novels, picture books, chapter books – we love them all! Whatever age you are, we encourage you to celebrate the summer at FPL - all together now!

Learn more →

Upcoming Events

Preschool Story Time (Ages 3-5)

Tue, Jul 11, 9:30am - 10:00am

Walmart Story Time Room

AI For Small Businesses

Tue, Jul 11, 10:00am - 11:30am

The Willard and Pat Walker Community Room

Toddler Time (Ages 2-3)

Tue, Jul 11, 10:30am - 11:00am

Walmart Story Time Room

CFI Orientation: Video Studio \*

Tue, Jul 11, 11:00am - 1:00pm

CFI: Video Production Studio

Registration is now closed

Disability & Design

See all events

HOW TO  
BOOK

# *WHAT ARE WE USING TODAY?*



- This learning lab is an overview of the A2Z heat press, the Epson large format printer and the Roland vinyl printer and cutter

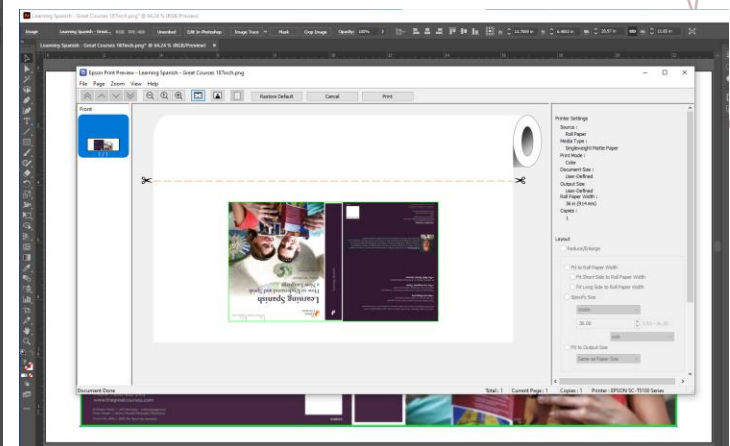
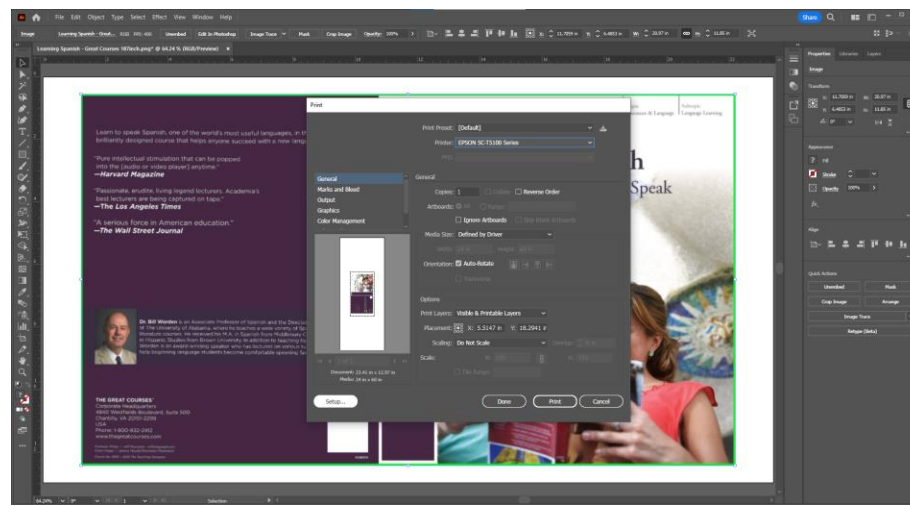
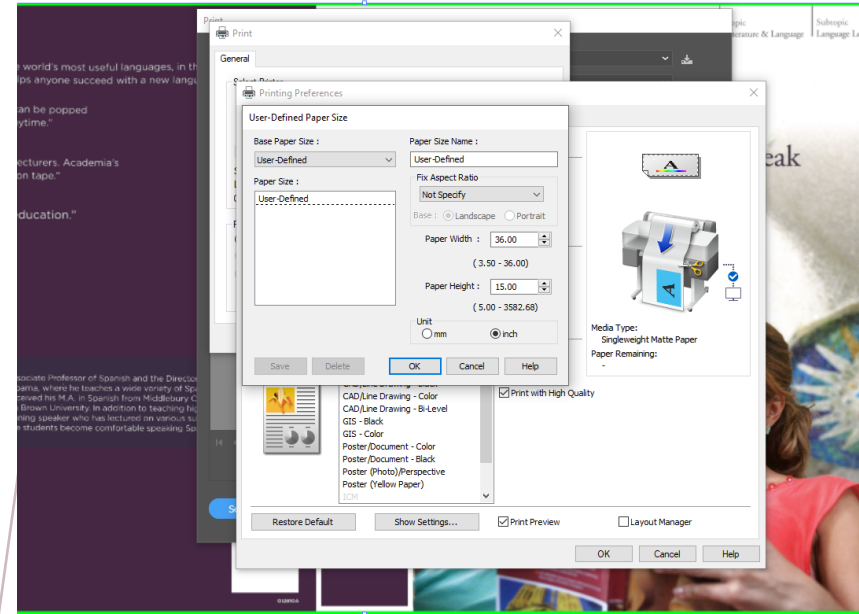
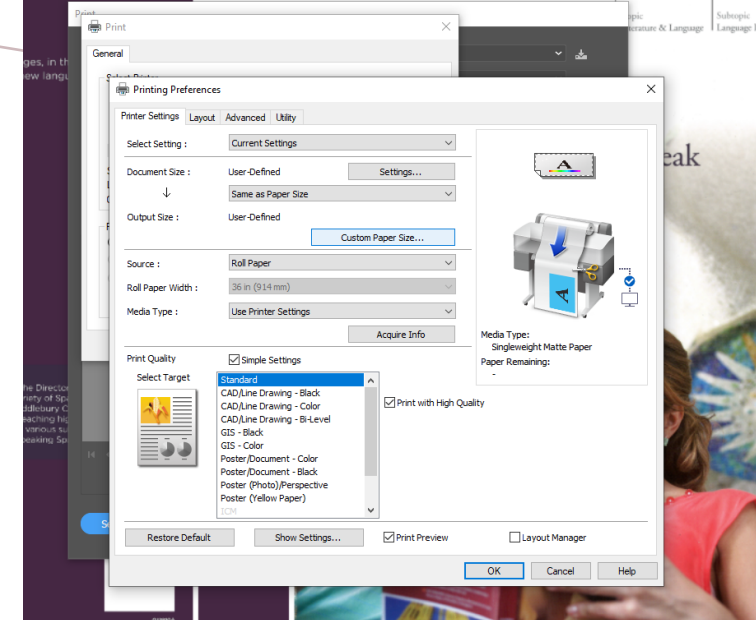
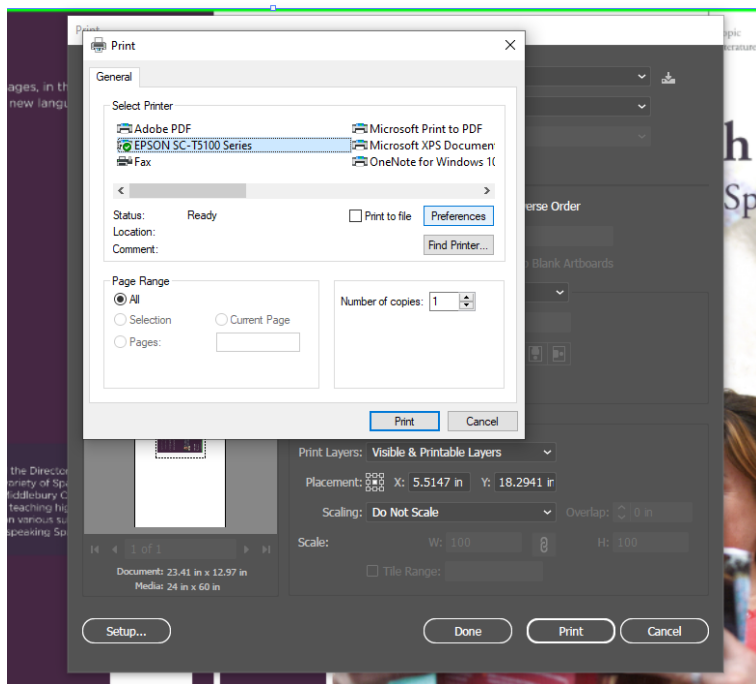
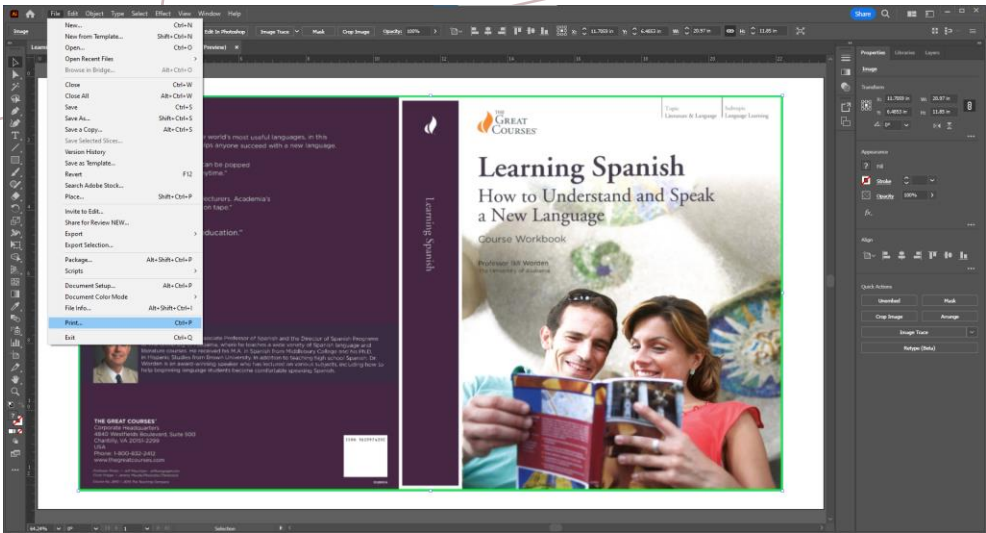


*EPSON LARGE FORMAT  
PRINTER*

# *EPSON CONTINUED*

- 1 type of paper on Epson, matte paper – 36 inches; Cuts paper off as well just does not do custom cuts
- Works better if you print from a different application such as Adobe illustrator/photoshop or acrobat
- Document size: Settings --> user defined  
user defined pulls from original document size from program
- Printer manages color, creates a better output from printer rather than doing it yourself
- Output: How big your sheet needs to be; Width is always going to be 36" and height is going to be how much paper you need, more height = more paper



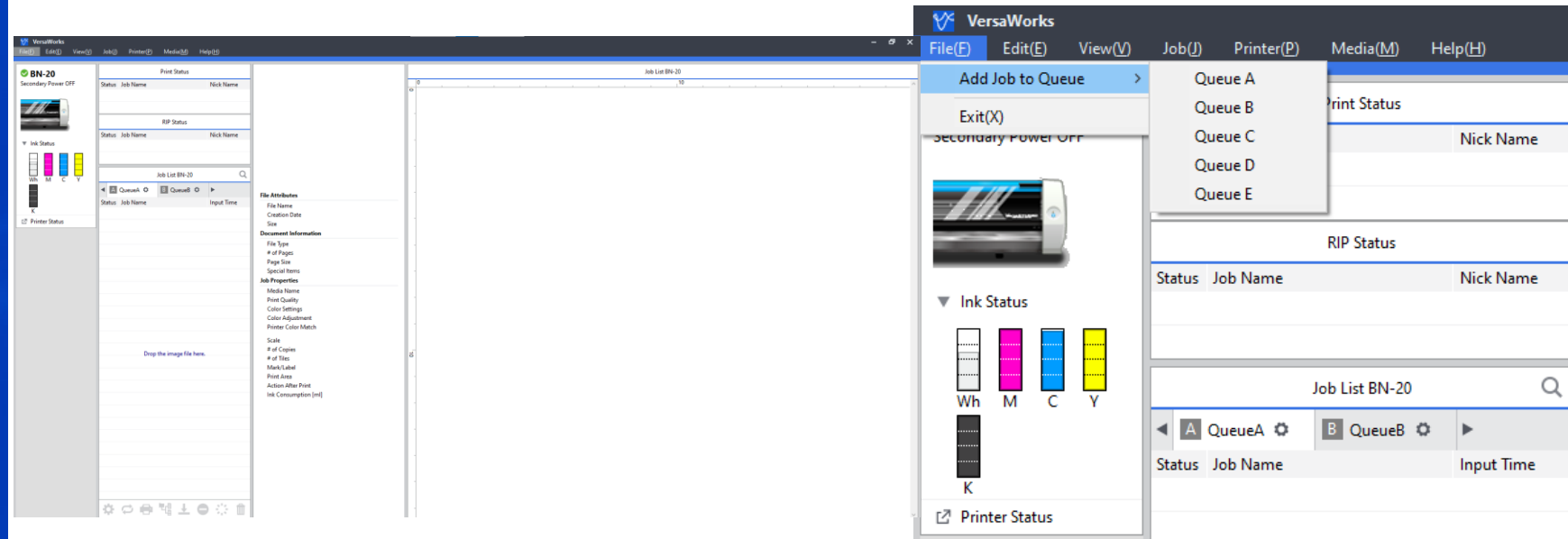
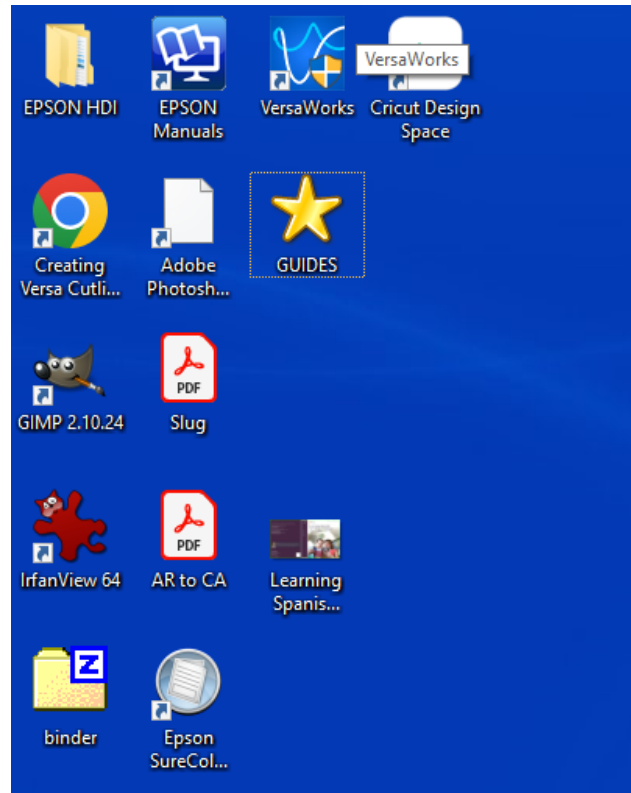




# *ROLAND BN-20 VINYL CUTTER AND PRINTER*

# *ROLAND BN-20*

- More versatile than the Epson printer. Can cut custom lines, can be used for stickers, making t-shirts, high quality posters, car stickers, etc.
- Versaworks is software for vinyl printer and cutter  
Queue A-E: Things waiting to get printed sit in the queue  
File -> Job -> A-E
- Nesting: Groups documents together so they print together, instead of reading it as 2 separate prints
- Layout -> Clip n' tile: Cropping tool on Versaworks software
- Cut controls: Profile cut, 2 cuts through recommended  
Cut lines will appear as red bouncing lines, whether custom or boundaries



*ROLAND CONT.*

*ROLAND CONT.*

Print Status

Status	Job Name	Nick Name

RIP Status

Status	Job Name	Nick Name

Job List BN-20

◀

A

QueueA



⚙

B

QueueB

⚙

▶

Status	Job Name	Input Time
	Learn to Play Guitar - Great C...	07/13 11:28
	Skates.pdf	07/13 11:28

⚙

↺

🖨

📄

⬇

⊖

⚙

🗑

Nest

Job List BN-20

Status	Job Name	Input Time
→	Nest Job 7/13 - 1	07/13 11:29
PDF icon	Learn to Play Guitar - Grea...	07/13 11:28
PDF icon	Skates.pdf	07/13 11:28

Job Settings (Sheet Job 7/13 - 1)

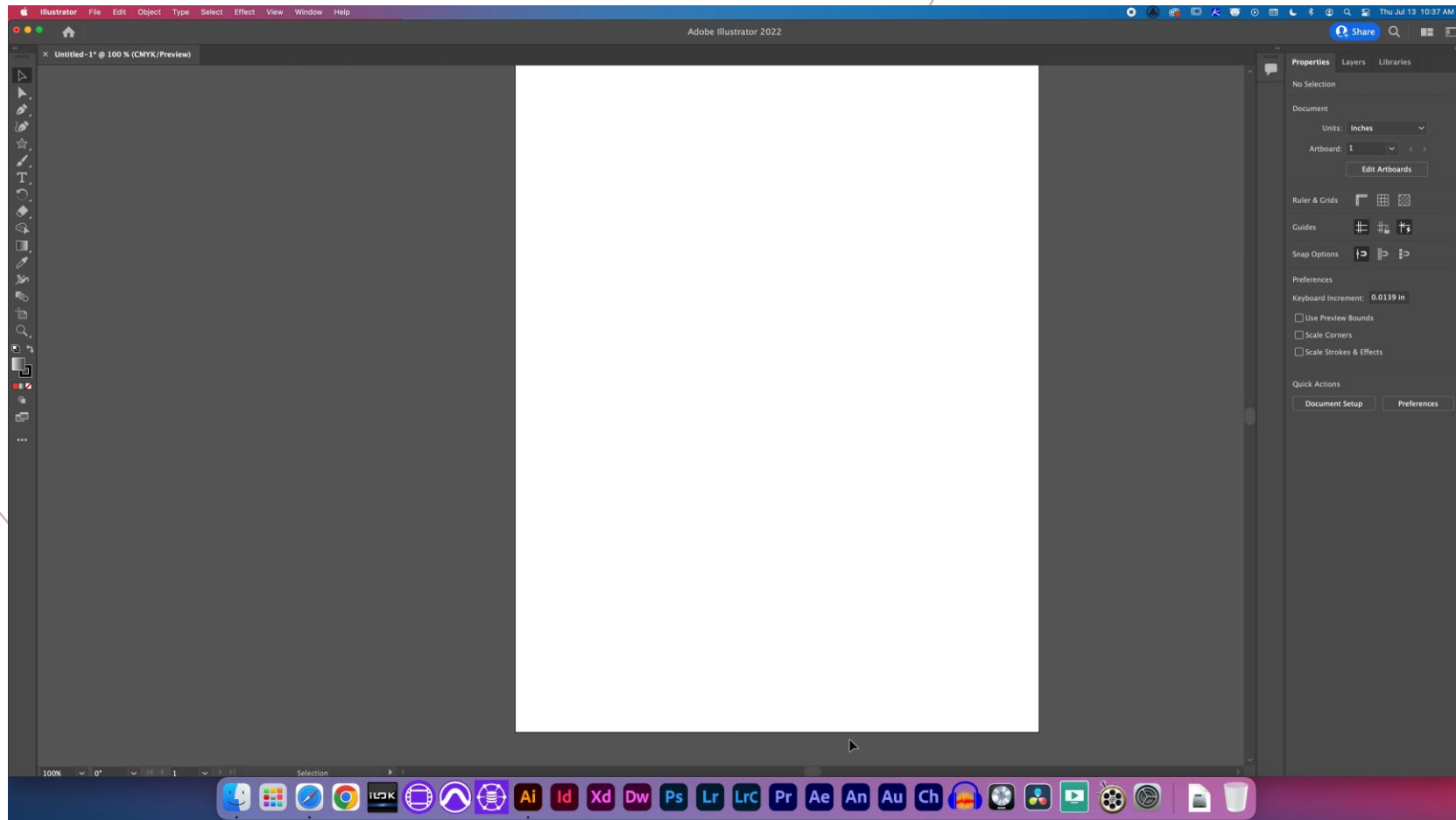
Cutting Options

Operation Mode: Print & Cut

- ☒ Cut All Paths
- ☒ Cut Image Boundaries
- ☐ Return to Origin After Print
- ☐ Return to Origin After Cut
- ☒ Cut Passes: 2 times
- Cutting Conditions Settings
  - Cutting Speed: 15 cm/min
  - Cutting Force: 50 gf
  - Blade Offset: 0.250 mm

[illegible]

# *CUSTOM CUT LINES*







# A2Z HEAT PRESS

# *A2Z HEAT PRESS*

- Always treat the heat press like it is hot!
- To turn on/off - Red power switch on the back of the machine
- When no LEDs are on, the display shows the current temperature
- Mode button (middle button) sets temperature (Fahrenheit) and time (seconds)
- Hit the mode button once to change temperature using the (+) and (-)
- Press mode button twice to adjust time in seconds using (+) & (-)
- The heat press will not heat up while any mode setting is on (adjusting heat and time)